

April 14, 2025

Addendum No. 03

File Reference Number: RFP 2025 010

Title: Engineering Design Services for North Bay Shops Compressed Air System Upgrades

RE: Clarifications/Questions

Please refer to the following information/clarification:

Item 1: Who is filing the TSSA registration/application? Is it ONTC or is it included in the consultant scope of work

Answer: ONTC advises that the filing of the TSSA registration/application shall be included in the consultants' scope of work.

Item 2: In regards to the filing fees, who will be responsible to pay for the inspection fees, application fees to TSSA, etc?

Answer: ONTC advises that any and all fees related to TSSA registration shall be included in the proposal.

Item 3: Please advise if we can arrange for a site visit to view the proposed locations and power supply.

Answer: ONTC has scheduled a site visit to take place on **Thursday, April 24th at 2:00pm**. This will take place at 915 McIntyre Street East. Upon arrival, respondents shall meet at the security trailer. Please complete site visit registration forms, attached at Appendix "A" and return to nicole.laplante@ontario.northland.ca prior to **Wednesday, April 16, 2025 at 4:00pm**.

Item 4: Are there drawings illustrating buried services at the facility?

Answer: ONTC advises that there are no drawings currently available.

Item 5: Are there planned additions to the existing buildings that we should be aware of (i.e. additions to the Paint Shop) that would limit installation options outside of the existing structure?

Answer: Yes, there will be some expansions.

Item 6: Based on the information provided, there is limited space in the Diesel and Wheel Shops for a compressor installation. Would it be out of the question to have the compressors located in the Car Shop serve the Car/Diesel, and Wheel Shops? Just want to confirm that this scenario has not been specifically excluded.

Answer: The idea is to have a standalone compressed air system for each building except the Diesel Shop and the Wheel Shop can be done on the same system.

Item 7: Are there drawings of the proposed sea can structure in the Paint Shop and for the foundation/slab where the internal sea can structure is located?

Answer: Yes, please see Drawing S2.1 attached at Appendix "B".

Item 8: Are there drawings of the room and structure for the location in the Car Shop that is being considered for the compressor installations?

Answer: Yes, please see structural drawings attached at Appendix "C".

Item 9: We utilize a Leica P50 Lase Scanner for many of our projects, especially those that are not local. Would there be any concerns with us bringing a laser scanner to the site visit?

Answer: ONTC does not foresee any issues in that respect, however, we would ask that you confirm that you will be bringing the scanner ahead of time.

Item 10: Does ONTC have a piping specification that they utilize for compressed air piping?

Answer: In terms of piping specifications, ONTC advises that none would be required as long as they are TSSA registered and meet the codes and regulations.

Item 11: Does ONTC have a pipe support standard that they utilize?

Answer: No.

Item 12: Is the service tunnel connecting the Car/Diesel/Wheel Shops heated during the winter months?

Answer: ONTC advises that the service tunnel connecting the Car/Diesel/Wheel Shops is not heated during the winter months.

This Addendum hereby forms part of the RFP.

Regards,

Nicole Laplante
Procurement Contracts Specialist
nicole.laplante@ontarionorthland.ca

Appendix "A"

RESPONDENTS' MEETING REGISTRATION FORM

Reference Number: RFP 2025 010

Title: Engineering Design Services for North Bay Shops Compressed Air System Upgrades

Submitted To: **ONTARIO NORTHLAND TRANSPORTATION COMMISSION**

Please confirm that you plan to attend the Respondents' Meeting by emailing a completed copy of this Registration Form, together with the attached Release of Liability to nicole.laplante@ontarionorthland.ca, prior to Wednesday, April 16, 2025 at 4:00 p.m. EST.

Failure to submit all forms by the time required may result in ONTC not being able to accommodate your attendance at the site.

Date and Time of Meeting: Thursday, April 17, 2025 at 2:00 p.m.

Location: 915 McIntyre Street East, North Bay, ON (Security Trailer)

COMPANY NAME: _____

CONTACT NAME: _____

ADDRESS: _____

TELEPHONE: _____

EMAIL _____

NUMBER OF PERSONS ATTENDING _____

PLEASE BRING THE FOLLOWING PERSONAL PROTECTIVE EQUIPMENT:

SAFETY BOOTS, REFLECTIVE VEST, HARD HAT, AND SAFETY GLASSES WITH SIDE SHIELDS.

ACCOMMODATION: ONTARIO NORTHLAND IS AN EQUAL OPPORTUNITY ORGANIZATION. ACCOMMODATION IS AVAILABLE FOR RESPONDENT'S WITH DISABILITIES THROUGHOUT THE PROCUREMENT PROCESS. IF ACCOMMODATION IS REQUIRED, PLEASE CONTACT nicole.laplante@ontarionorthland.ca.

NOTE: THE ATTACHED RELEASE OF LIABILITY WILL BE REQUIRED TO BE EXECUTED BY ANY PERSONS ATTENDING THE SITE MEETING PRIOR TO ATTENDANCE.

**RELEASE OF LIABILITY
IN RESPECT OF ENTERING AND WORKING UPON
ONTARIO NORTHLAND TRANSPORTATION COMMISSION PROPERTY**

The undersigned applicant requests permission of Ontario Northland Transportation Commission (hereinafter referred to as "ONTC") to enter on ONTC property to attend a site meeting commencing at 2:00 p.m. on Thursday, April 17, 2025 in North Bay, Ontario, associated with RFP 2025 010.

In consideration of ONTC permitting the Applicant and his/her/its employees, servants and agents to enter ONTC property for the purpose of the site meeting, the Applicant agrees it shall:

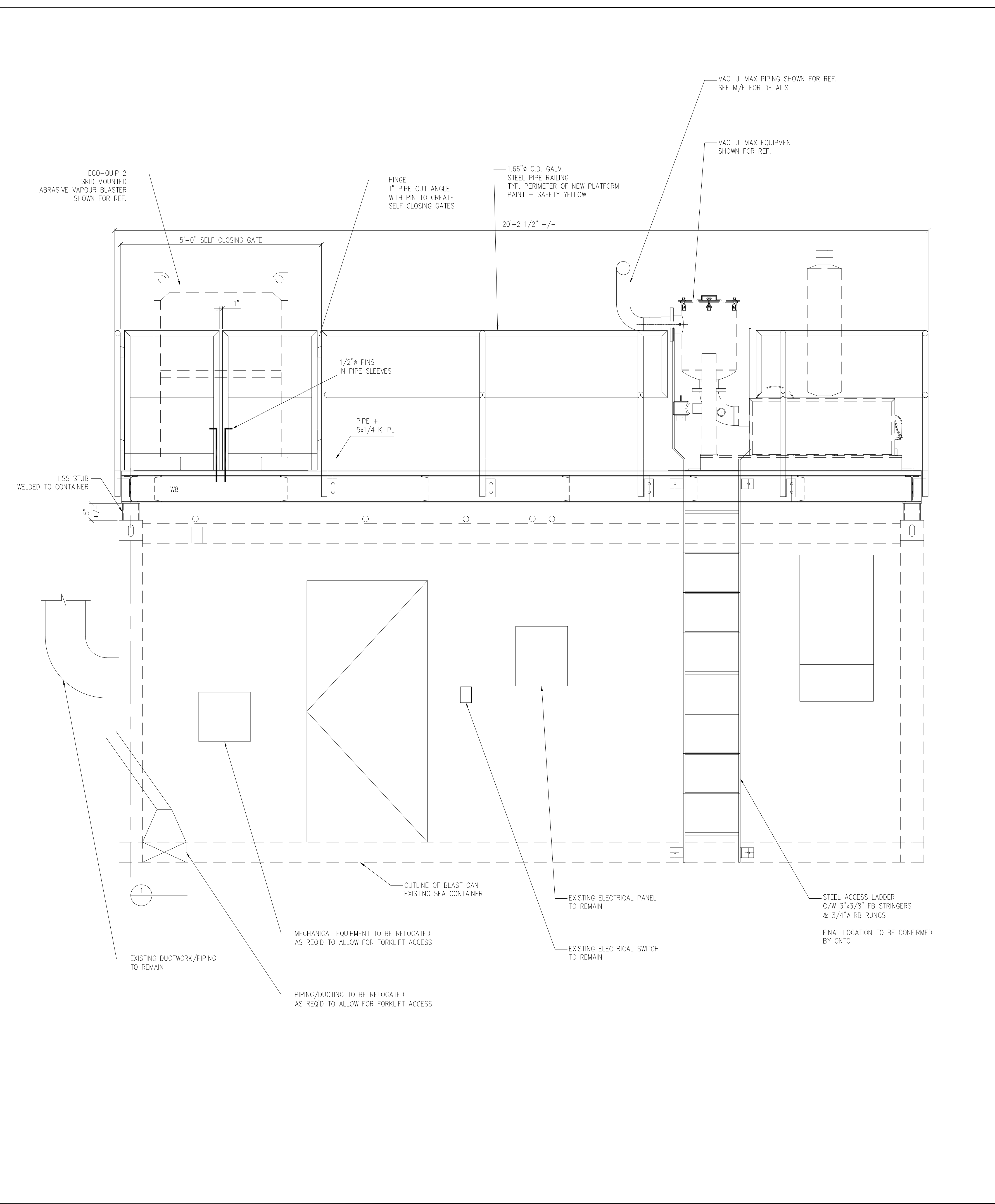
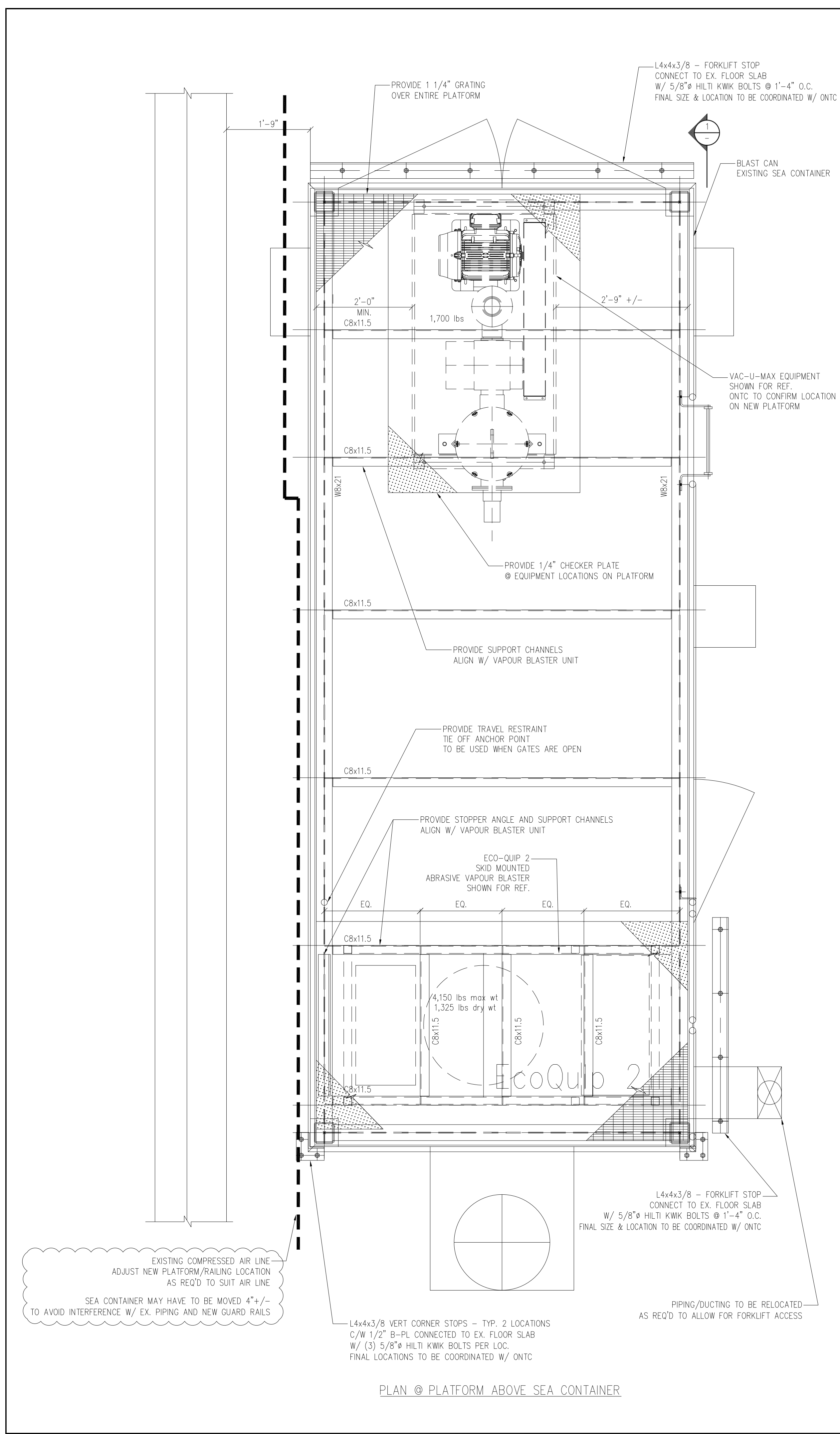
1. follow all instructions and directions from ONTC representatives while on ONTC property;
2. be liable for any and all damages to persons or property which may arise out of or be connected with the Applicant's entry on ONTC property and the Applicant agrees to indemnify ONTC against any and all actions, suits, claims, damages, costs, liability and expenses which may arise by reason of the Applicant's operations while on ONTC property.
3. fully indemnify and save harmless ONTC, its officers, directors, employees, consultants, subconsultants, contractors, and agents (collectively "ONTC Indemnitees") from any kind of liability, suit, claim, demand, fine, action, loss, damage, legal cost and disbursement, or for which ONTC or ONTC Indemnities may become liable or suffer in connection with the Applicant's entry on ONTC property. For the purposes of this indemnity, ONTC is acting as the trustee of the ONTC Indemnitees. This indemnity section will survive the expiry of this permission;
4. enter on ONTC property at the sole cost, risk and expense of the Applicant; and,
5. release and discharge ONTC, its employees, servants and agents of and from any and all claims and demands of whatever nature and howsoever caused by reason of any loss, damage or injury to person or property which the Applicant or its employees, servants and agents may sustain or suffer while on ONTC property.

DATED AT _____ THIS _____ DAY OF _____, 2025.

Applicant _____

Witness _____

Appendix "B"



<p>project: ONTARIO NORTHLAND PAINT SHOP - VACUUM & HOPPER INSTALLATION 916 Midway S.E., NORTH BAY, ONTARIO NORTH BAY, ONTARIO</p>	
<p>title: VAC-U-MAX UNIT - PLAN & SECTIONS</p>	
<p>drawn by: BM</p>	<p>checked by: TIM T</p>
<p>scale: NTS</p>	<p>project no: 231398</p>
<p>date plotted: SEPT 19 23</p>	
<p>date revised:</p>	
<p>dwg no: S2.1</p>	

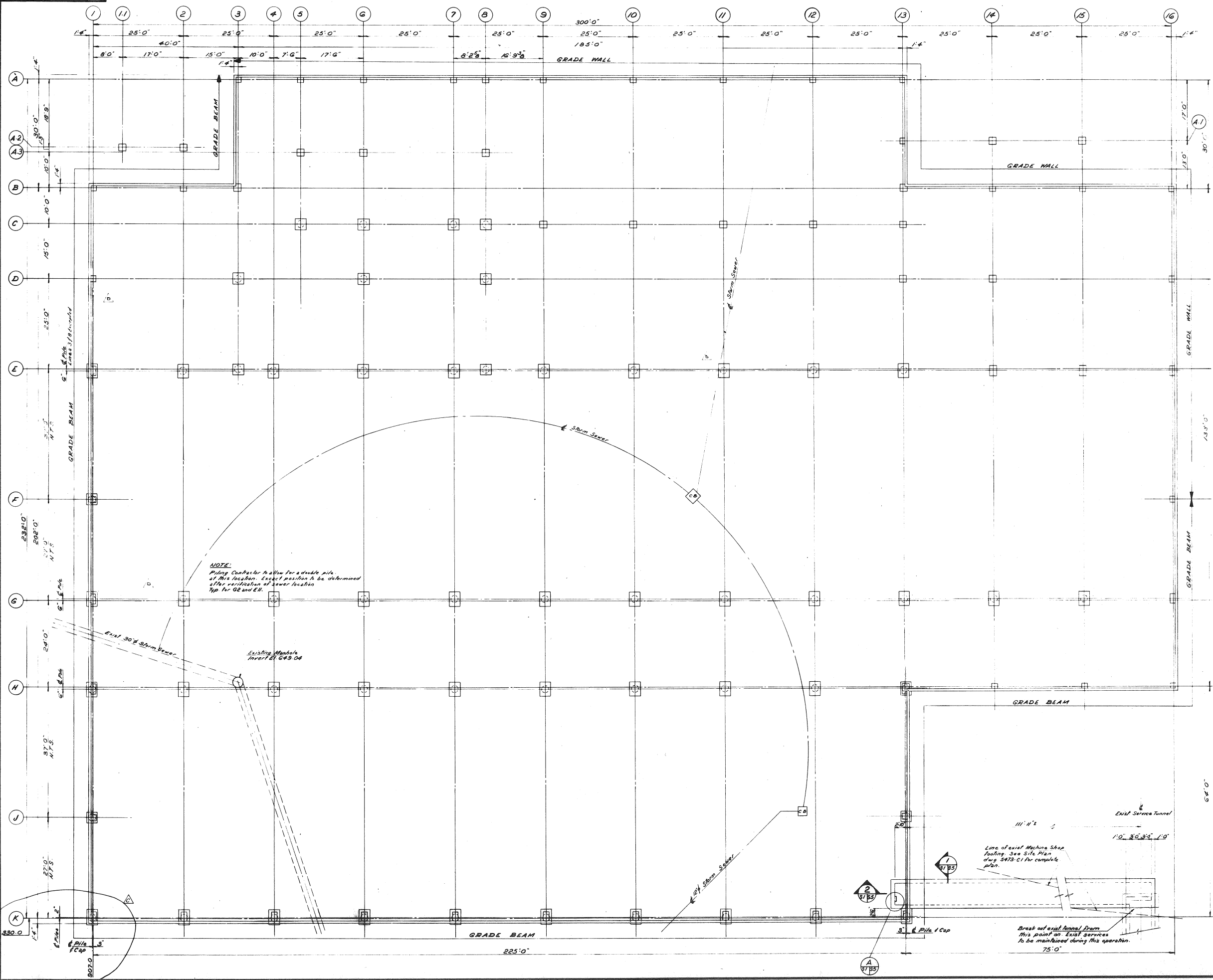
ISSUED FOR REVIEW
SEPT 19 23

revised

NORTHSHORE ENGINEERING & DRAFTING SERVICES

184 McNaughton Ave.
NORTH BAY, ONT.
705-495-0861

Appendix "C"



North Arrow

A detail no.
B location drawing no.
C drawing no.

notes and reference drawings

GENERAL NOTES:

- The Contract Specifications form an integral part of the drawings.
- The Contractor shall verify all dimensions and shall report any discrepancies to the Chief Engineer before proceeding with the work.
- All workmanship except where noted otherwise shall be in accordance with the latest issue of C.S.A. Specifications, National Building Code of Canada and the contract specifications.

CONCRETE NOTES:

- Concrete construction shall conform to the requirements of the latest issue of C.S.A. Specification A23 and the contract specifications.
- Compressive strength of concrete at 28 days shall be 4000 p.s.i. for piles, 3000 p.s.i. remainder.
- Reinforcing steel shall be deformed bars meeting the requirements of C.S.A. Specification G30 series. Ties and stirrups 1/4" 50000 p.s.i. All other bars 1/2" 60000 p.s.i.
- Clear Cover to reinforcing steel: Cast against earth 3"; Exposed to weather 2"; Not exposed to weather or not in contact with the ground 1 1/2".
- All exposed corners to have 1/4" chamfer unless noted otherwise.
- Wall pours shall not exceed 45' between pumps.

For Location Plan and Soil Data see dwg 5473-1
For Foundation Details see dwg 5473-2
For door openings in grade beams and grade walls see dwg 5473-33

□ indicates 24" reinforced concrete pile with expanded base
Maximum concentric design load 350k

no.	date	revisions	drawn	checked	approved
C	10-1-74	Issue for Piling Contract			
B	10-1-74	Issued for General Contract Tender			
A	10-27-74	Issued for Piling Contract			

COLE, SHERMAN & ASSOC. LIMITED
TORONTO, ONTARIO

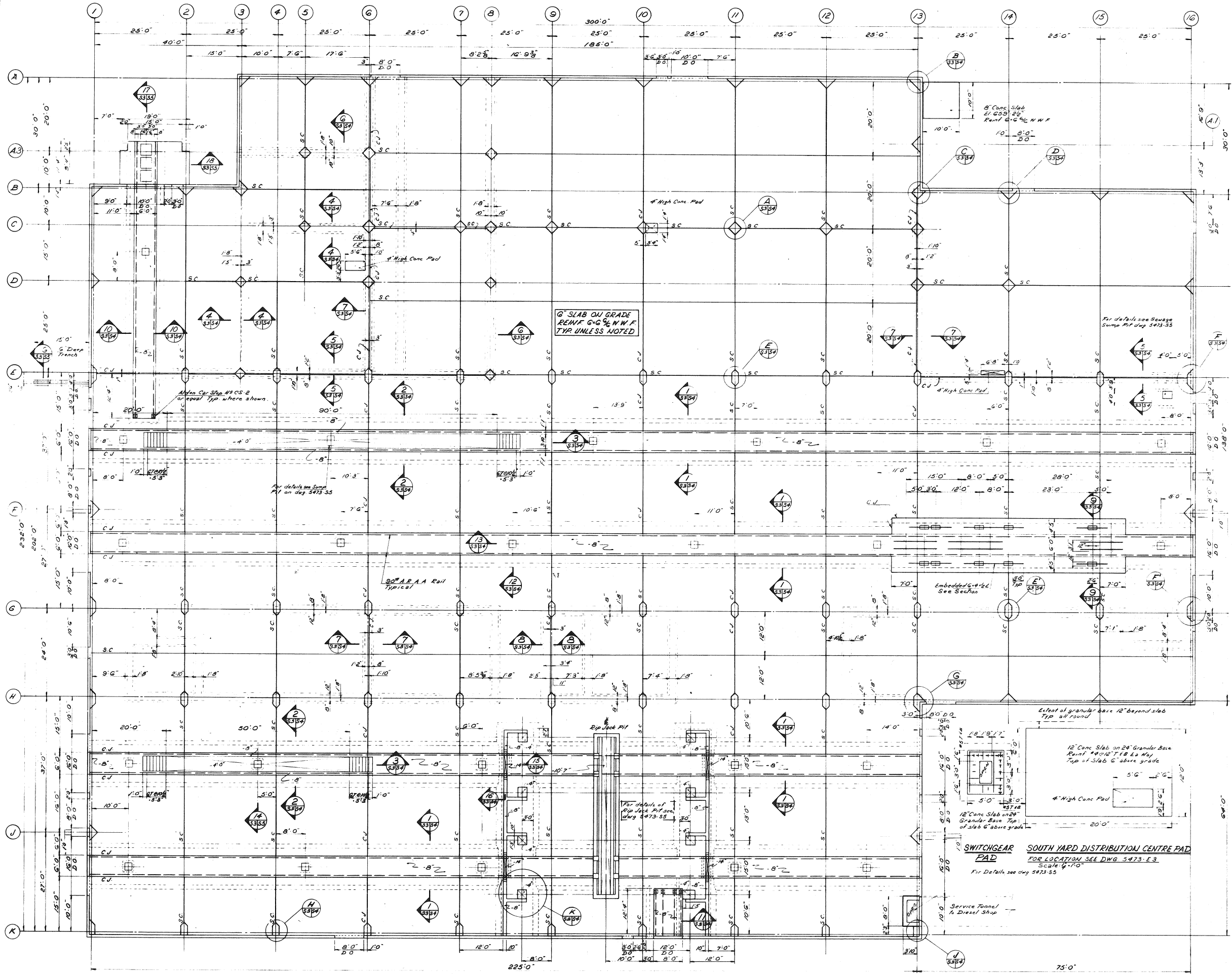
ONTARIO NORTHLAND RAILWAY
NORTH BAY YARD
CONSOLIDATION OF REPAIR FACILITIES

REPAIR FACILITY

CONCRETE

FOUNDATION LAYOUT

designed by CSL	checked by C	date MARCH, 74
drawn by F.J.W.	approved by T.J.S.	
scale 1/8" = 1'-0"	drawing number 5473-S1	project number 5473



notes and reference drawings

FINISHED FLOOR EL. ± 0.00 UNLESS NOTED.

S.C. DENOTES SAW CUT - 1/2" DEEP

C.J. DENOTES CONSTRUCTION JOINT

D.O. DENOTES DOOR OPENING

FOR GENERAL NOTES SEE DWG 5473-S

CUT EVERY OTHER WIRE OF MESH & SAW CUTS

revisions		no.	date	issued for	checked	approved
A		1	Mar 74	Issued for General Contract Tender		
B		2				
C		3				
D		4				
E		5				
F		6				
G		7				
H		8				
I		9				
J		10				
K		11				

COLE, SHERMAN & ASSOC. LIMITED
TORONTO, ONTARIO

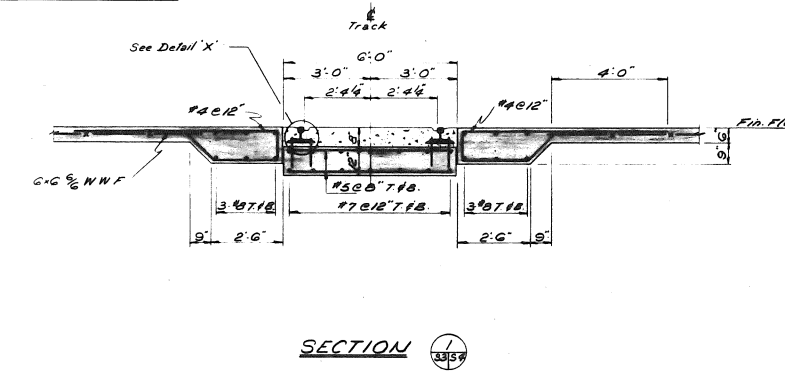
ONTARIO NORTHLAND RAILWAY
NORTH BAY YARD
CONSOLIDATION OF REPAIR FACILITIES

REPAIR FACILITY

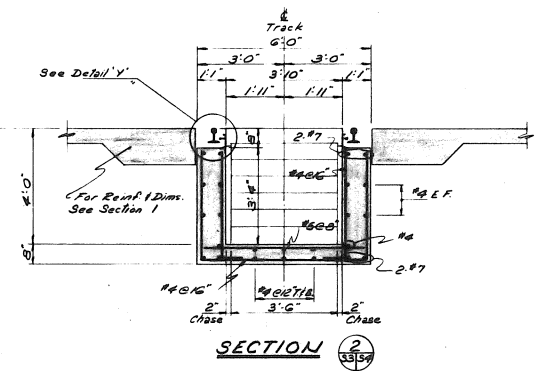
CONCRETE

FIRST FLOOR SLAB LAYOUT

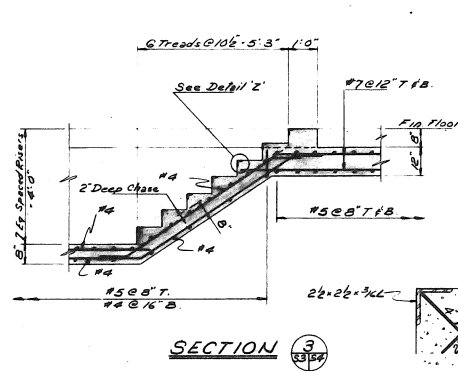
designed by C.S.L.	checked by J.J.W.	date MARCH, 74
drawn by F.J.W.	approved by T.J.S.	
scale 1/8" = 1'-0"	drawn status drawing number 5473-S3	rev. no. C



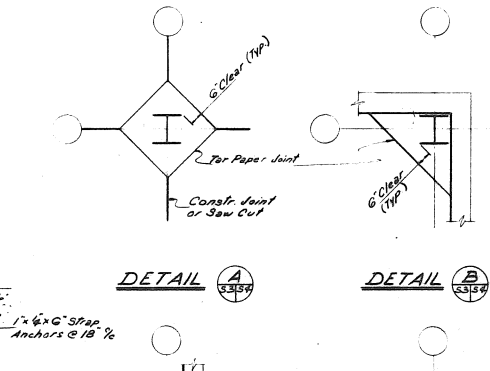
SECTION 1



SECTION 2

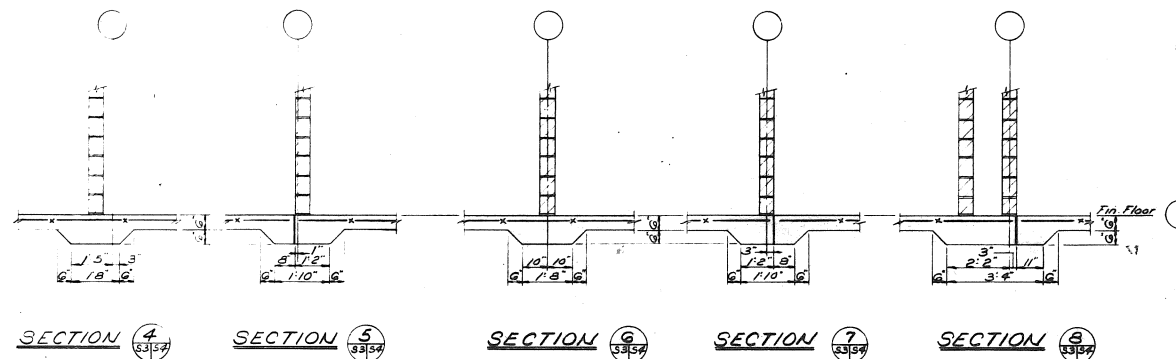


SECTION 3



DETAIL A

DETAIL B



SECTION 4

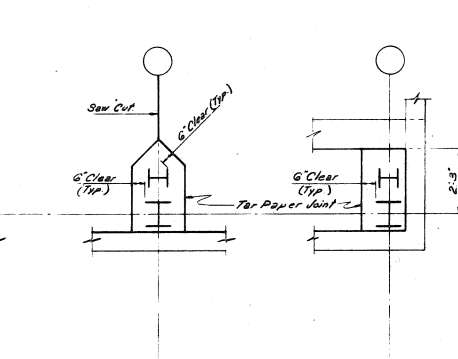
SECTION 5

SECTION 6

SECTION 7

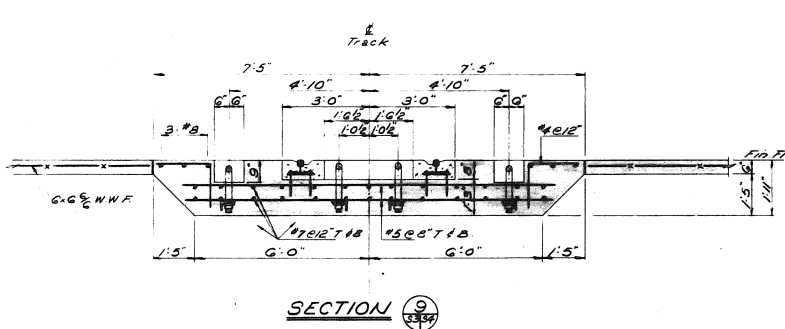
SECTION 8

SECTION 9

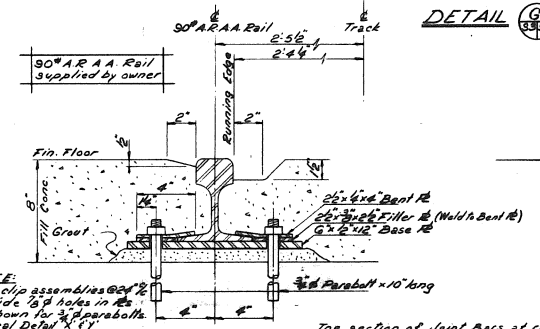


DETAIL C

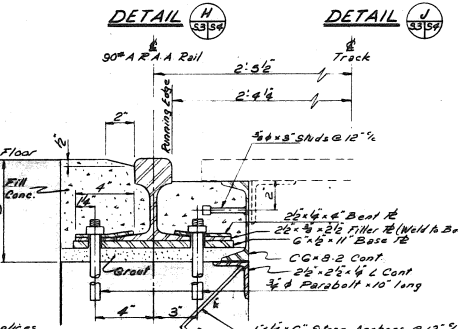
DETAIL D



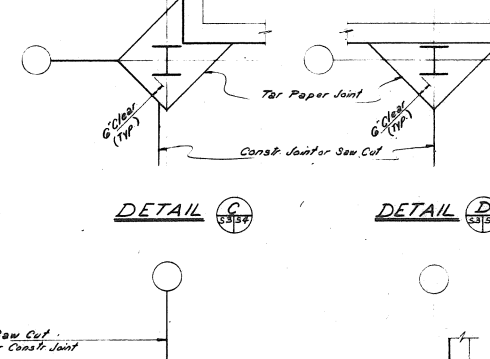
SECTION 10



DETAIL X

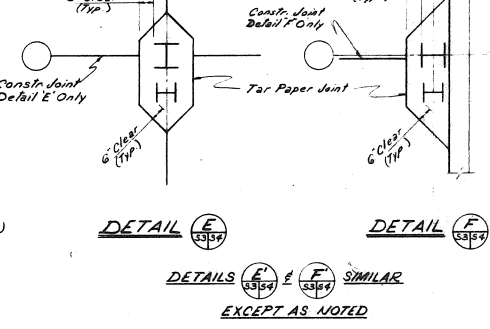


DETAIL Y



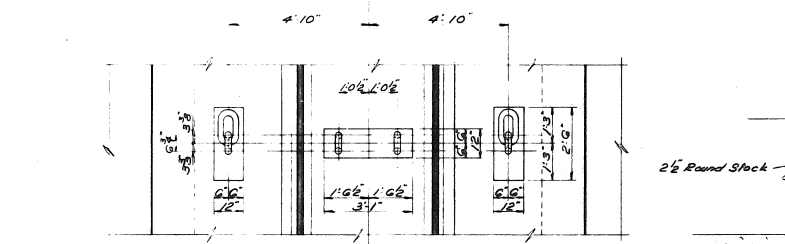
DETAIL E

DETAIL F

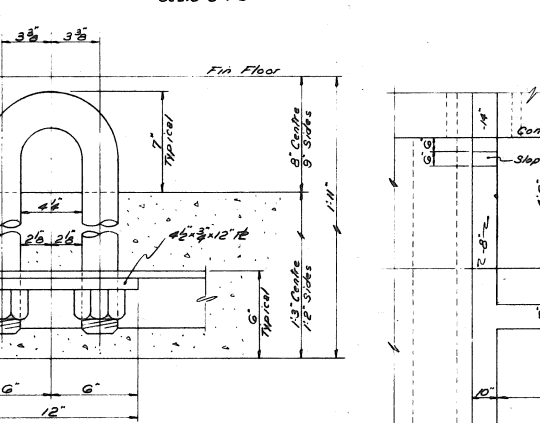


DETAILS G & H

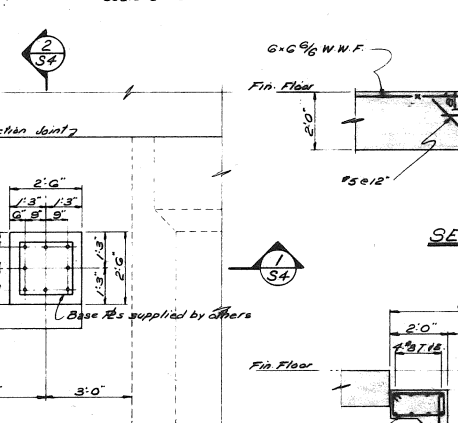
DETAILS I & J



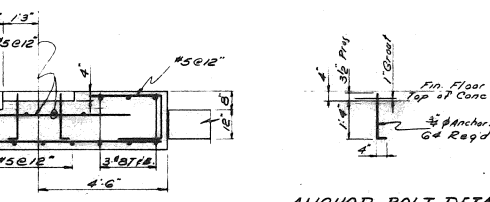
PLAN @ SECTION 9



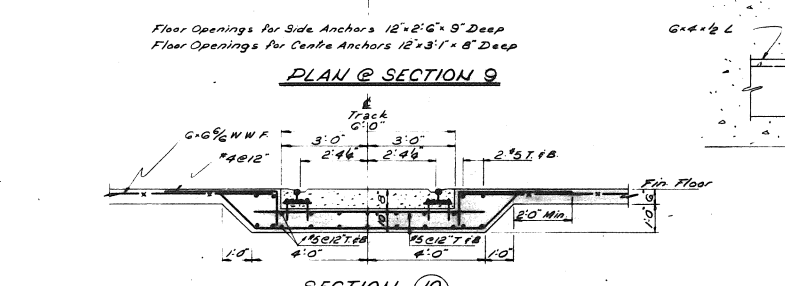
ANCHOR DETAILS



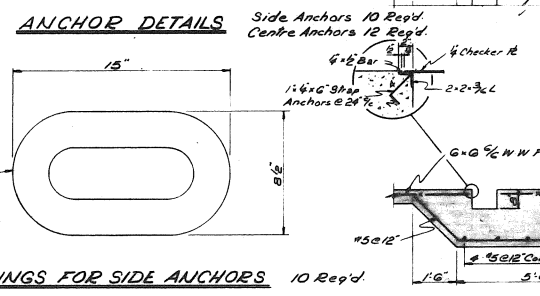
SECTION 11



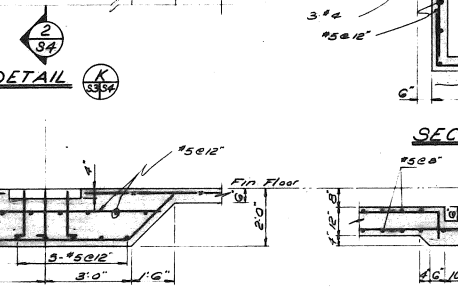
ANCHOR BOLT DETAIL



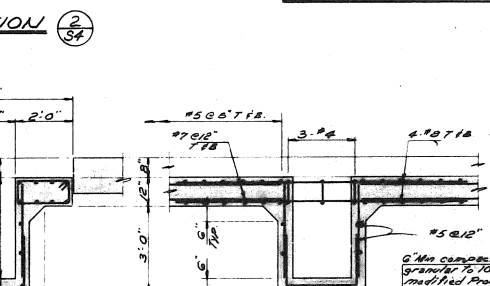
SECTION 12



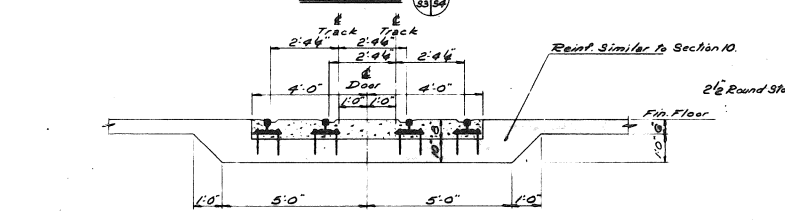
RINGS FOR SIDE ANCHORS 10 Req'd.



SECTION 13



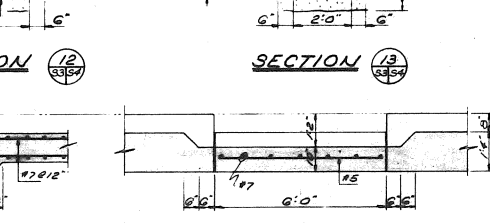
SECTION 14



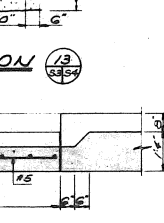
SECTION 15



SECTION 16



SECTION 17



SECTION 18

notes and reference drawings

A detail no.
B location drawing no.
C drawing no.

10-174 50050 FOR CONCR. A.F.D. P.N. ...
A 10-74 issued for General Contract Tender
no. date issued for General Contract Tender
no. date

revisions

COLE, SHERMAN & ASSOC. LIMITED
TORONTO, ONTARIO

ONTARIO NORTHLAND RAILWAY
NORTH BAY YARD
CONSOLIDATION OF REPAIR FACILITIES

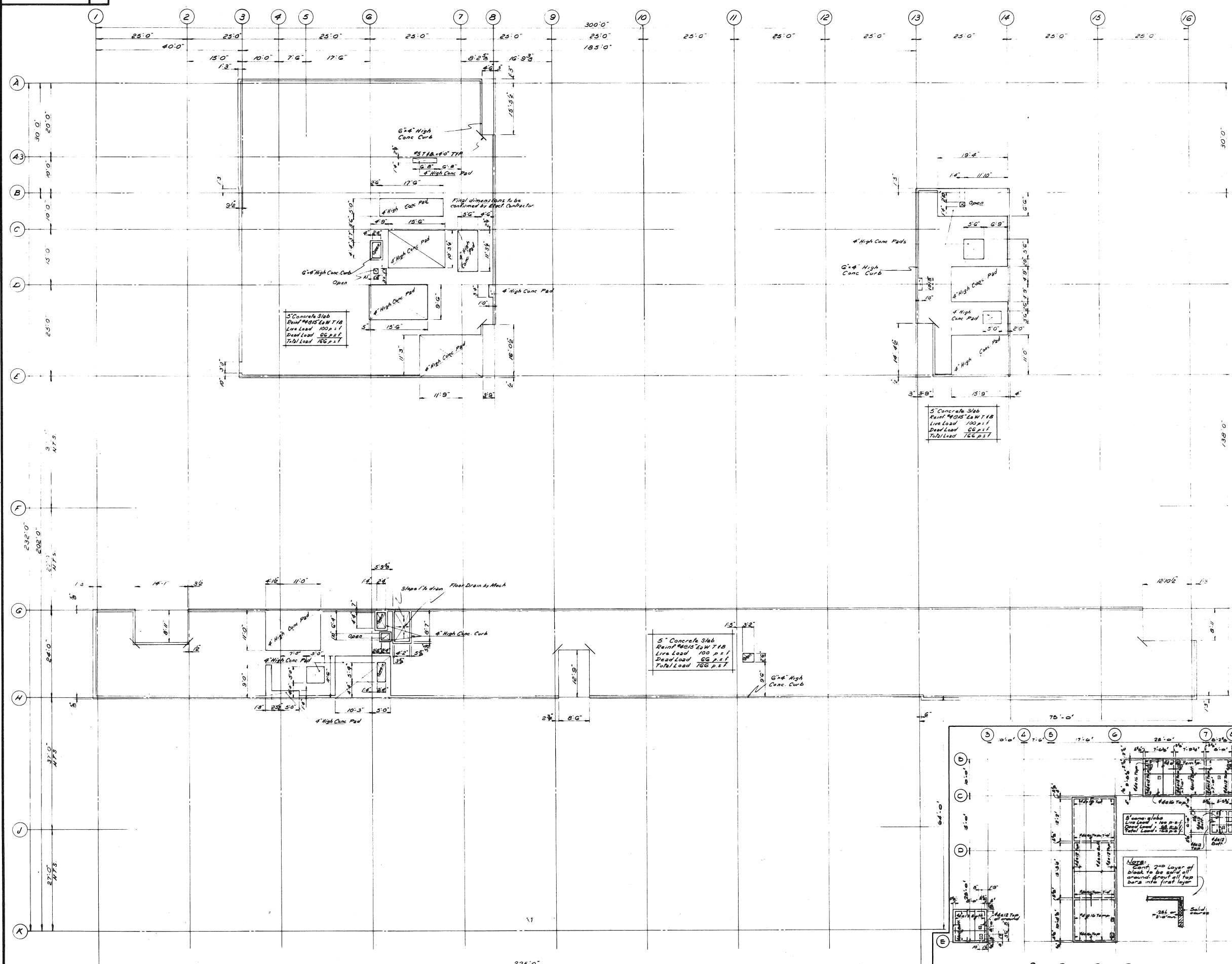
REPAIR FACILITY

CONCRETE

SLAB DETAILS

designed by C.S.L. checked by J.J.W. date MARCH, 74
drawn by F.J.W. approved by T.J.S.
scale 1/2" = 1'-0" draw. status drawing number 5473-S4
project number 5473

Drawing number
5473-S6



North Arrow

A detail no.
B location drawing no.
C drawing no.

notes and reference drawings
FINISHED FLOOR ELEV 678.22
FOR GENERAL NOTES SEE DWG 5473-S1

no.	date	drawn	checked	approved
1	Mar. 74			

revisions

COLE, SHERMAN & ASSOC. LIMITED
TORONTO, ONTARIO

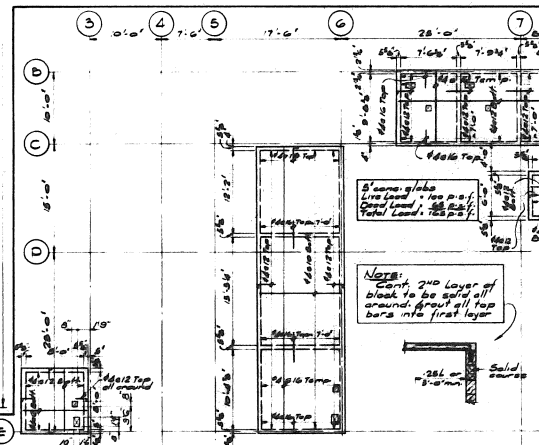
ONTARIO NORTHLAND RAILWAY
NORTH BAY YARD
CONSOLIDATION OF REPAIR FACILITIES

REPAIR FACILITY

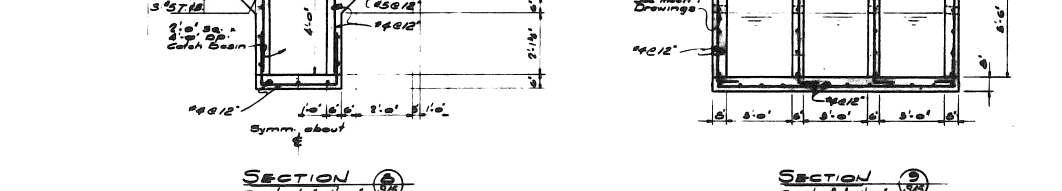
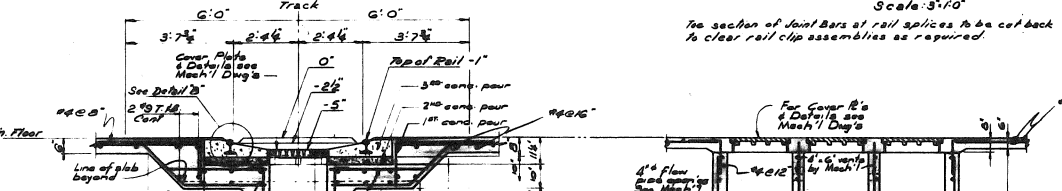
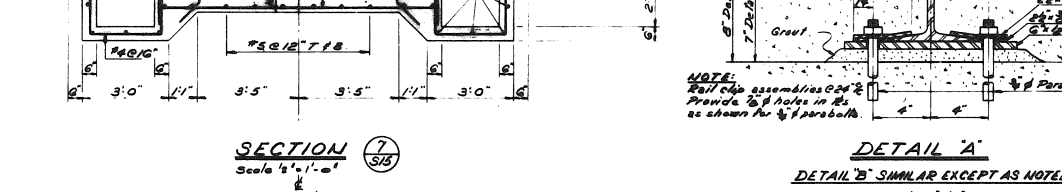
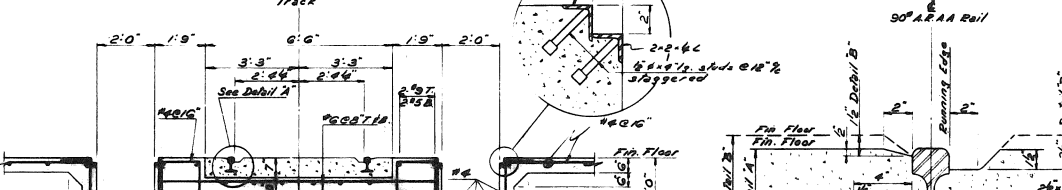
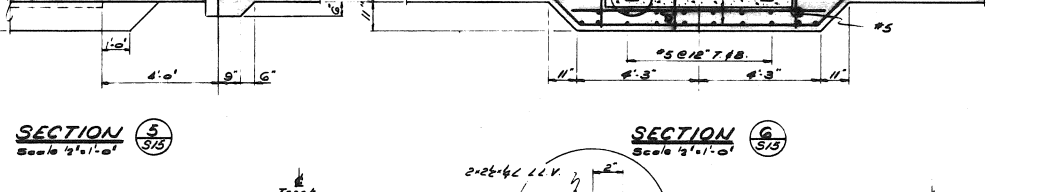
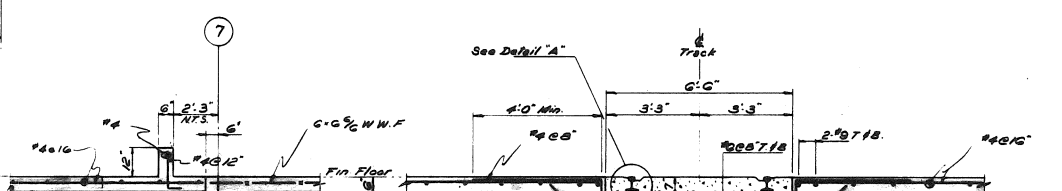
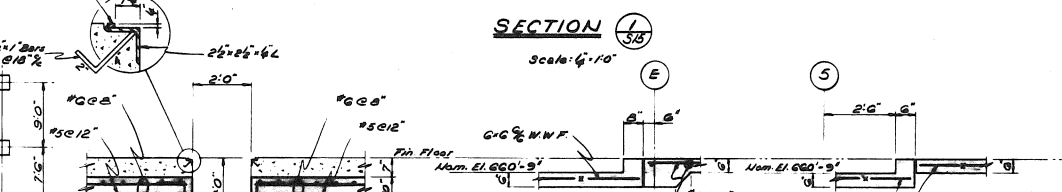
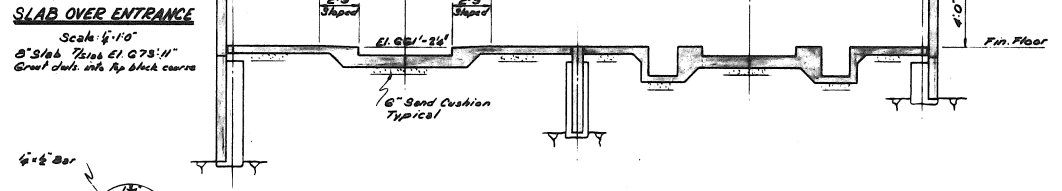
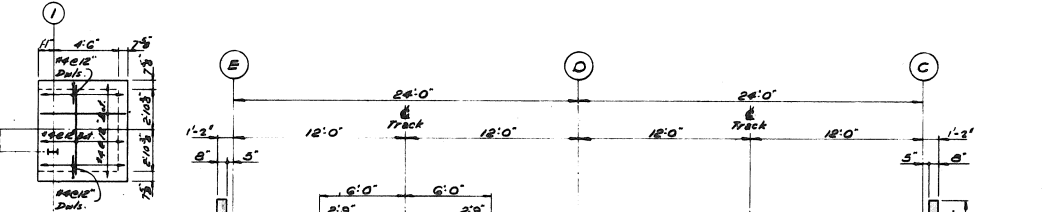
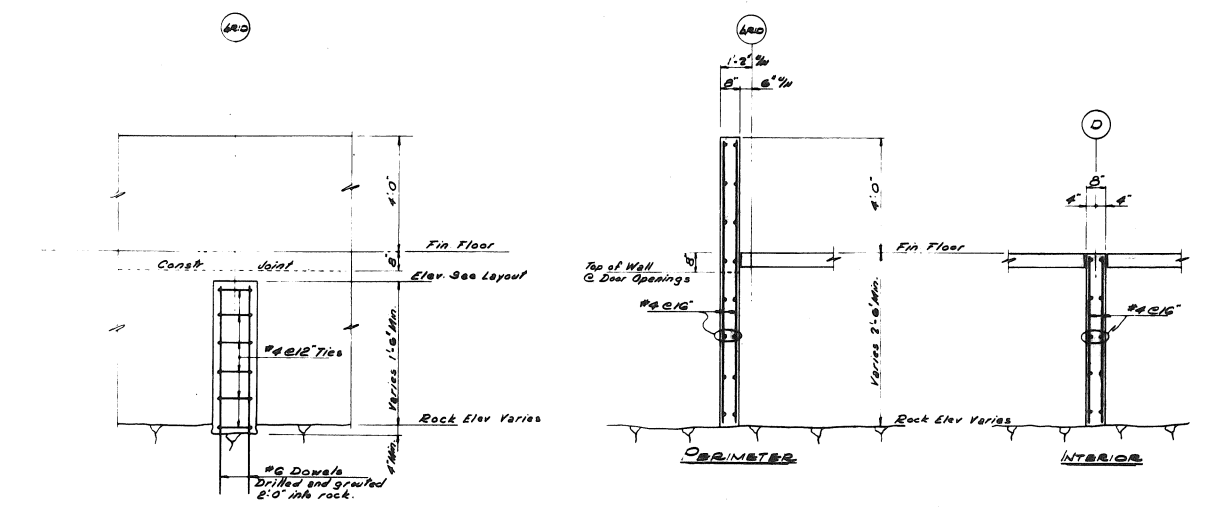
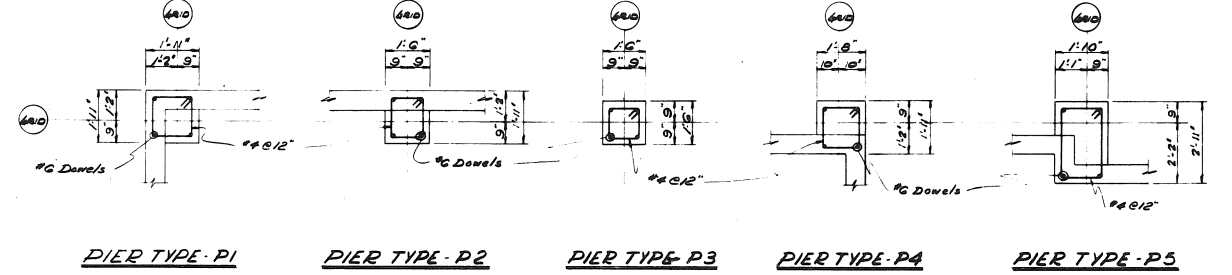
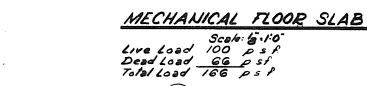
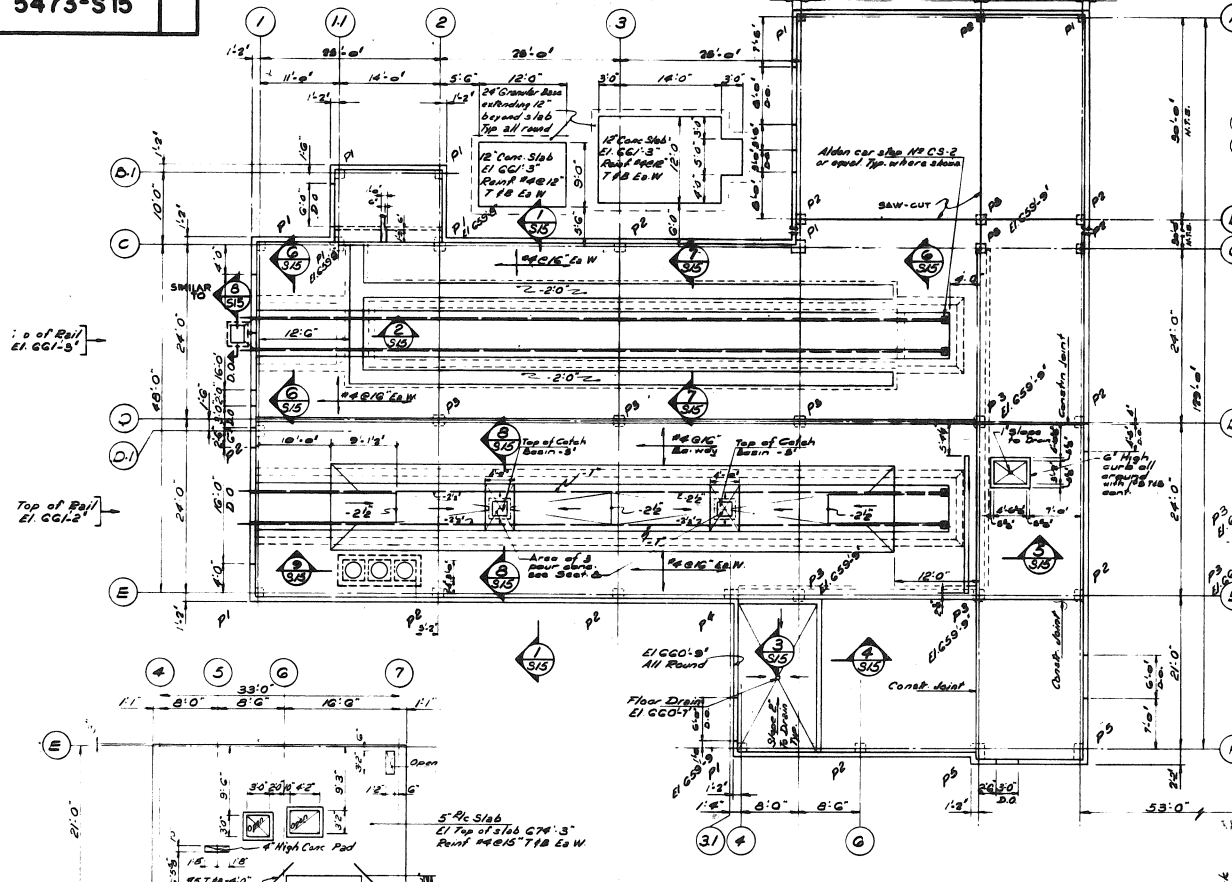
CONCRETE

drawing title
SECOND FLOOR SLABS

designed by	CSL	checked by	T.J.S.	date	MARCH, 74
drawn by	F.J.W.	approved by	T.J.S.		
scale	1/8" = 1'-0"	drawing number	5473-S6	rev. no.	B
project number	5473				



ROOF SLABS OVER OFFICES
Scale 1/8" = 1'-0"
Top of conc. to be at EL 681.7 unless noted
Slab thickness to be 5" unless noted



A	Detail no.
B	Location drawing no.
C	Drawing no.

Notes and reference drawings:
For Location Plan and Soil Data see dwg. 5473-S1
For General Notes see dwg. 5473-S1
D.O. denotes door openings.
This Contractor is not an anchor bolts according to the Anchor Bolt Plan supplied by the Structural Steel Contractor. Structural Steel Contractor to supply the anchor bolts.

REV.	DATE	BY	CHKD.	DESCRIPTION

COLE, SHERMAN & ASSOC. LIMITED
TORONTO, ONTARIO

ONTARIO NORTHLAND RAILWAY
NORTH BAY YARD
CONSOLIDATION OF REPAIR FACILITIES

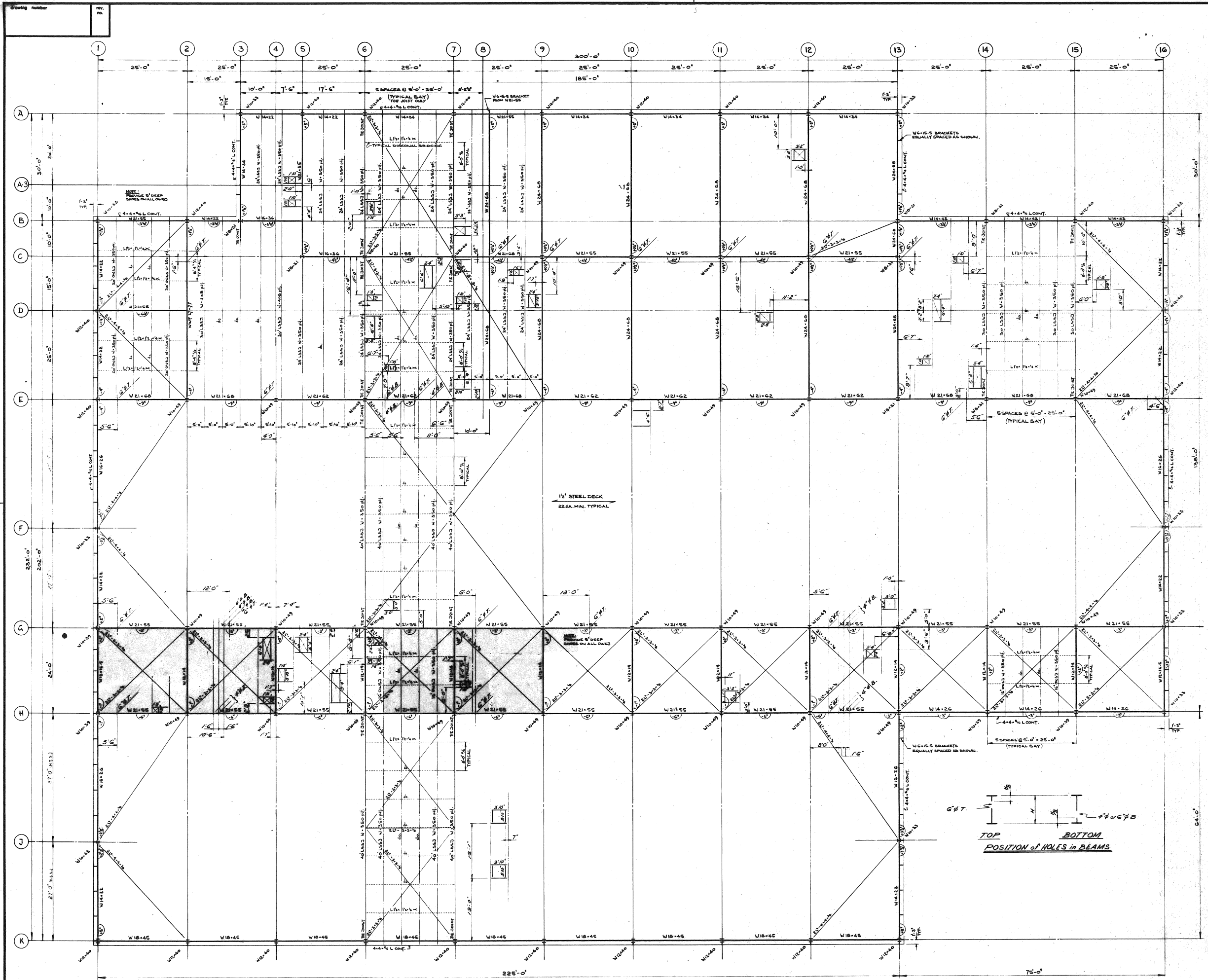
PAINT SHOP

CONCRETE

FOUNDATIONS, FLOOR SLAB LAYOUTS AND DETAILS

designed by C.S.L. checked by J.H. date MARCH, 74
drawn by F.J.W. approved by T.J.S.

scale AS SHOWN drawing number 5473-S15



Drawing Number

REV. NO.

A detail no.

B location drawing no.

C drawing no.

notes and reference drawings

- TOP OF STEEL EL. 69'-2 1/2" UNLESS SHOWN THUS
- DEAD LOAD - 27 PSF
- SNOW LOAD - 45 PSF
- TOTAL LOAD - 72 PSF
- TOP CHORD EXTENSION ON JOIST LINES A, B, H, K.
- PROVIDE W.G.-15 BRACKETS @ COLUMNS ON LINES A, B, H, K WHERE FRAMING IS BY BEAM AND NOT BY JOIST.
- ALL CROSS BRACING FASTENED AT UNDERSIDE OF JOIST AT LEAST EVERY 20 FEET.
- PROVIDE W.G.-15 BRACKETS @ COLUMNS ON LINES I, J, L, K.
- INDICATES SUSPENDED DETAIL CEILING

GENERAL NOTES:

- STRUCTURAL STEEL FABRICATION AND ERECTION SHALL CONFORM TO THE LATEST U.S.A. SPECIFICATIONS S16 AND THE CONTRACT SPECIFICATIONS.
- STRUCTURAL STEEL SHALL CONFORM TO C.S.A. SPECIFICATION 240.21 GRADE 44W.
- WELDED CONNECTIONS SHALL BE BEARING TYPE CONNECTIONS USING ASTM HIGH STRENGTH BOLTS UNLESS OTHERWISE NOTED.
- WELDED CONNECTIONS SHALL BE MADE USING E70 AN ELECTRODES, UNLESS OTHERWISE NOTED.
- TYPE OF CONSTRUCTION: SIMPLE.
- THE BOTTOM CHORD OF ALL TIE JOISTS AND THEIR CONNECTIONS TO COLUMNS SHALL BE DESIGNED TO RESIST AN ADDITIONAL FORCE OF 2.7 KIPS DUE TO WIND AND CRANE LOADS.
- ALL ROOF OPENINGS SHOWN ON PLAN FRAMED WITH 3-8-1/2

no.	date	description	drawn	checked	approved
1	08-24-74	ISSUED FOR GEN. CONTR. AND P.N. T-1			
2	09-24-74	Roof openings located	F.J.W.	C.S.L.	T.J.S.
3	10-17-74	Issued for reference with General Contract, Tender			
4	03-27-74	Roof openings shown in crane F.J.W. C.S.L. T.J.S.			
5	09-17-74	Spans & sizes revised	F.J.W.	C.S.L.	T.J.S.
6	03-17-74	Addendum No. 1	F.J.W.	C.S.L.	T.J.S.

COLE, SHERMAN & ASSOC. LIMITED
TORONTO, ONTARIO

ONTARIO NORTHLAND RAILWAY
NORTH BAY YARD
CONSOLIDATION OF REPAIR FACILITIES

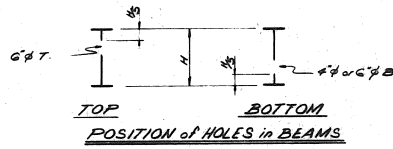
REPAIR FACILITY

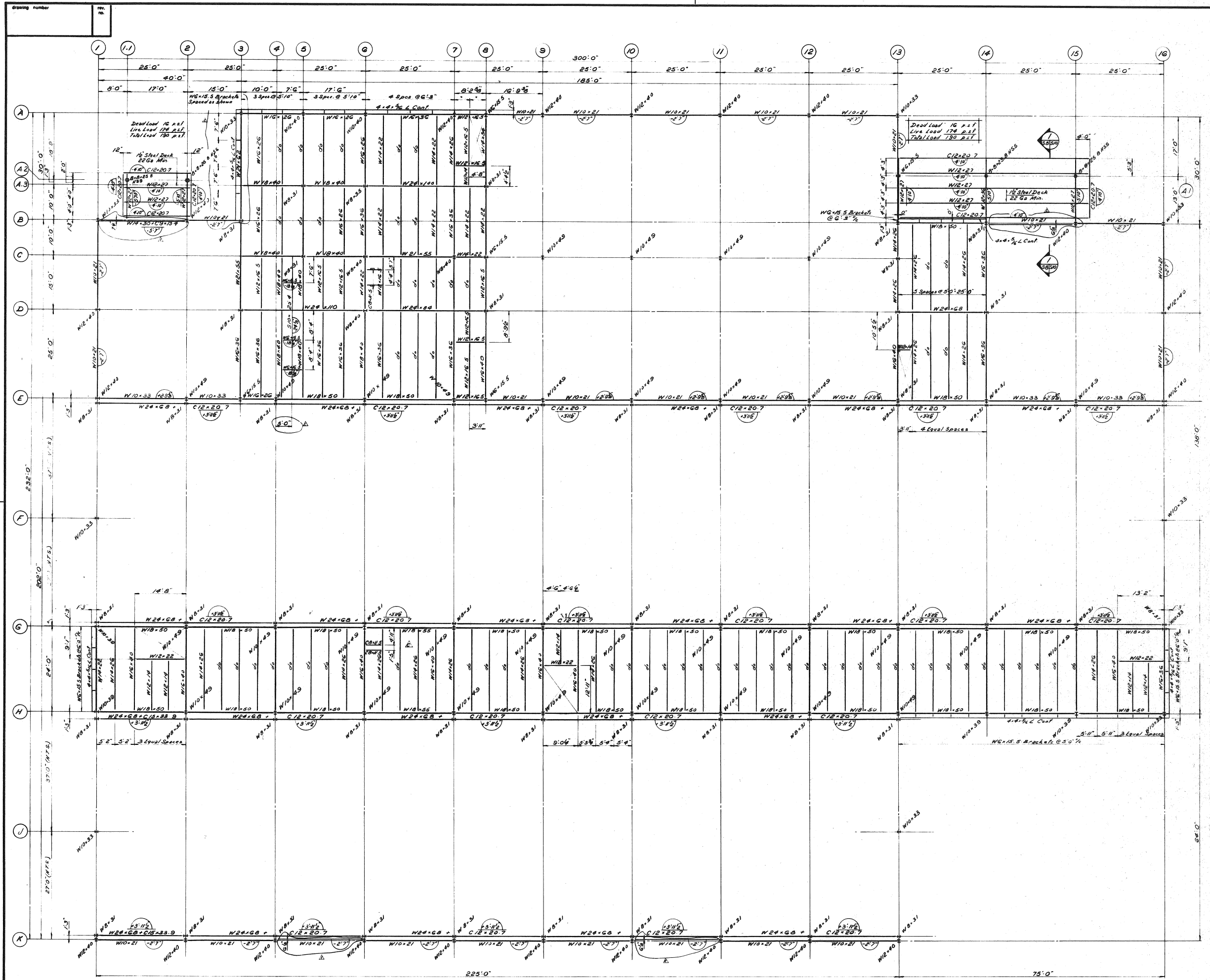
STRUCTURAL STEEL

Drawing Title

ROOF FRAMING PLAN

Designed by	C.S.L.	checked by		date	
Drawn by	H.Q.	approved by	T.J.S.		DEC 14, 73
Scale	1/8" = 1'-0"	Drawn status		Drawing number	
Project number	5473			5473-S7	F





Notes and reference drawings

TOP OF STEEL CL G₁-9₁ UNLESS SHOWN THUS

DEAD LOAD 10 P.S.F.
LIVE LOAD 170 P.S.F.
TOTAL LOAD 180 P.S.F.

FOR CRANE COLUMN BRACING SEE DWG. 5473-S10

revisions

A	10-8-76	REVISION FOR GENL. CONTR.	A.F.D.	R.N.	T.J.S.
E	22-9-76	2nd location revised Stops & brackets added	F.J.W.	C.S.L.	T.J.S.
D	16-7-76	Issued for reference with General Contract Tender			
C	5-3-76	Opening framing revised dims added, dim added, control, dim added	F.J.W.	C.S.L.	T.J.S.
B	25-1-76	Change 100% / General Revision	F.J.W.	C.S.L.	T.J.S.
A	25-1-76	Addendum #1	F.J.W.	C.S.L.	T.J.S.

designed by C.S.L. checked by T.J.S. date DEC 14, 73

drawn by F.J.W. approved by T.J.S.

scale 1/8" = 1'-0" drawing number 5473-S8

project number 5473

rev. no. F

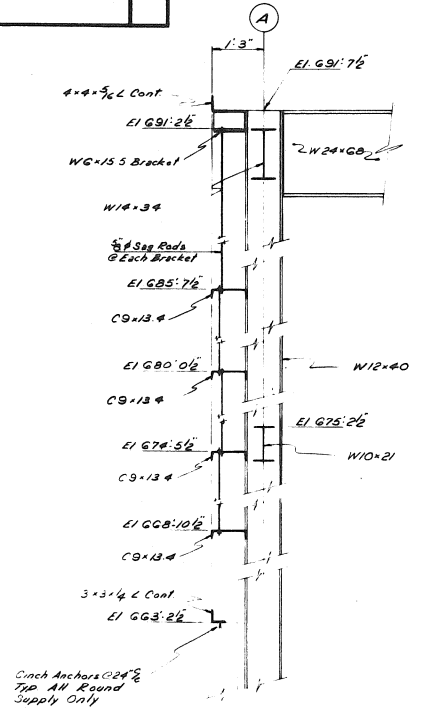
ONTARIO NORTHLAND RAILWAY
NORTH BAY YARD
CONSOLIDATION OF REPAIR FACILITIES

REPAIR FACILITY

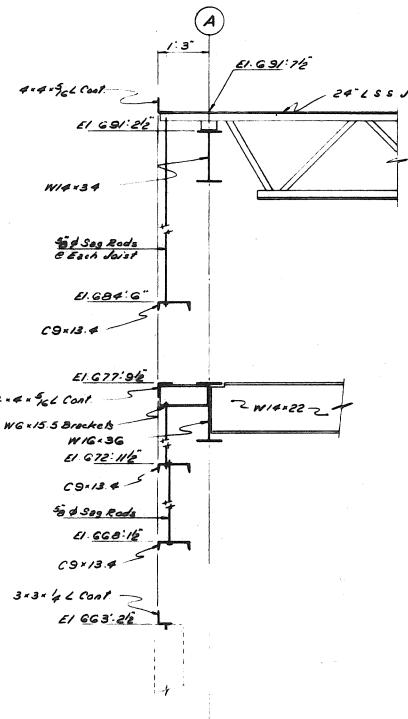
STRUCTURAL STEEL

SECOND FLOOR
FRAMING PLAN

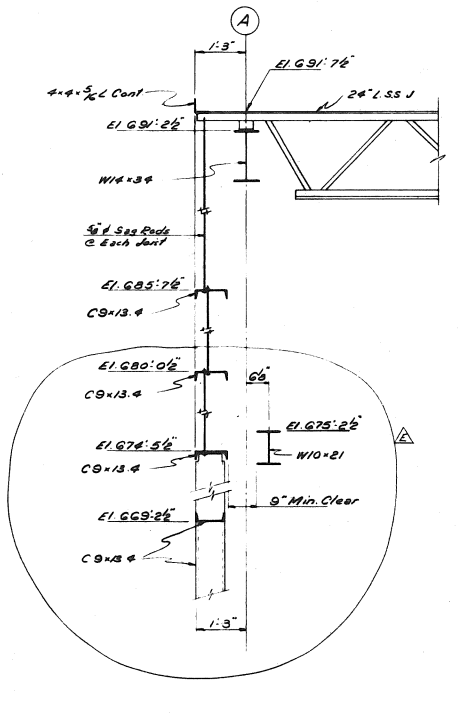
COLE, SHERMAN & ASSOC. LIMITED
TORONTO, ONTARIO



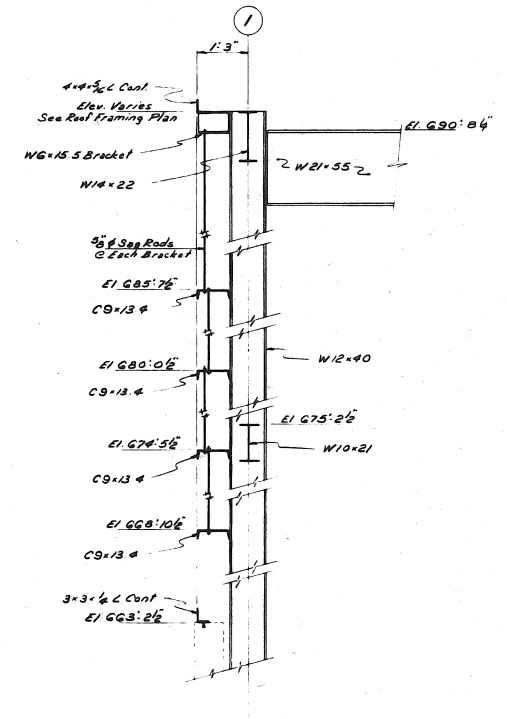
SECTION 1



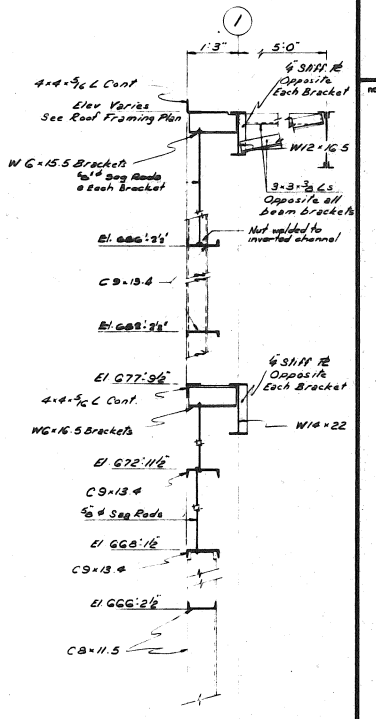
SECTION 2



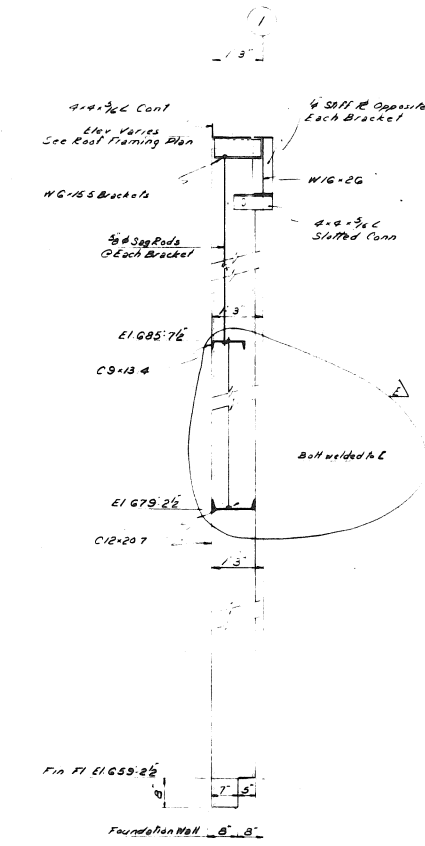
SECTION 3



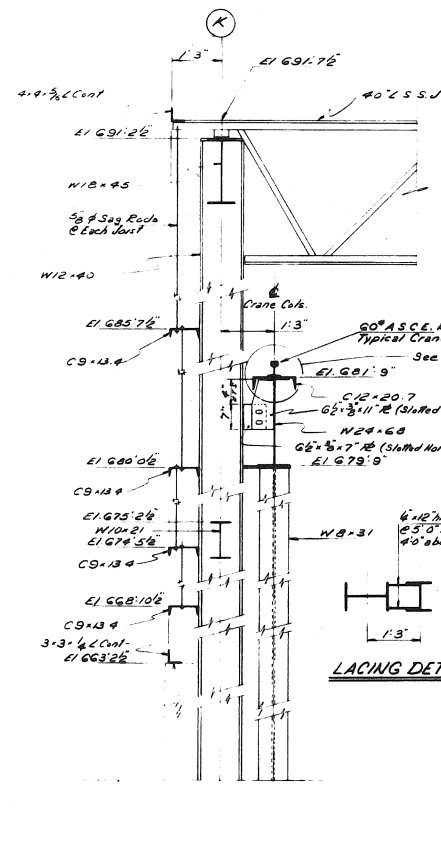
SECTION 4



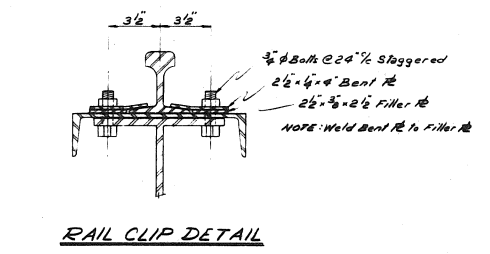
SECTION 5



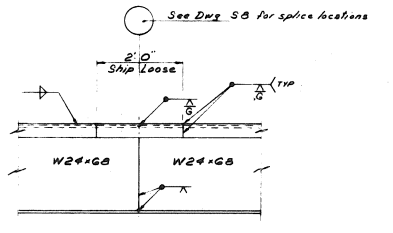
SECTION 6



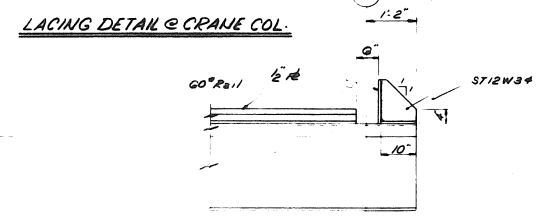
SECTION 7



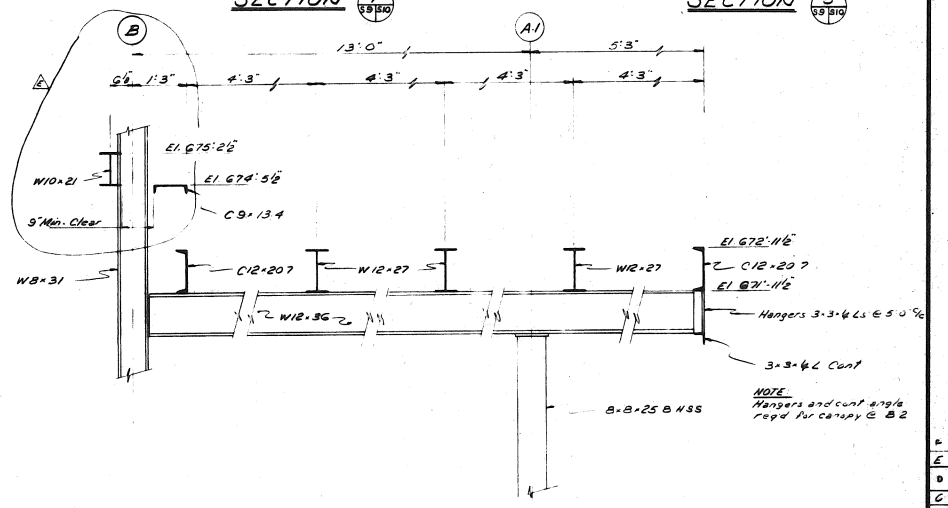
RAIL CLIP DETAIL



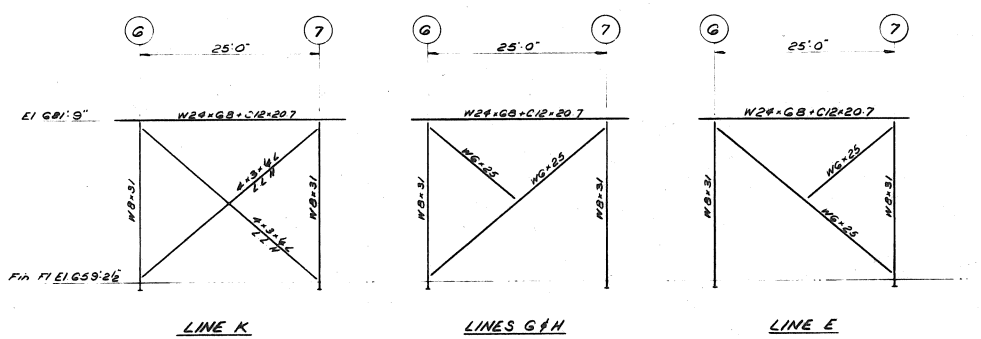
CRANE GIRDER FIELD SPLICE DETAIL



CRANE STOP DETAIL




SECTION 7



ELEVATION - CRANE COL. BRACING

notes and reference drawings

no.	date	revision	drawn	checked	approved
1	10-6-34	ISSUED FOR B.E.M. CONTR. AFD	P4	T.J.S.	
2	12-4-34	Sections revised	F.J.W.	C.S.L.	T.J.S.
3	Mar-74	Issued for Reference with General Contract Tender			
4	8-3-74	Issued for Reference in Sect. B	A.D.	C.S.L.	T.J.S.
5	10-17-74	Draw. Is. of Change, Self Revised	F.J.W.	C.S.L.	T.J.S.
6	12-7-74	Addendum #1	F.J.W.	C.S.L.	T.J.S.


COLE, SHERMAN & ASSOC. LIMITED
 TORONTO, ONTARIO

ONTARIO NORTHLAND RAILWAY
 NORTH BAY YARD
 CONSOLIDATION OF REPAIR FACILITIES

REPAIR FACILITY

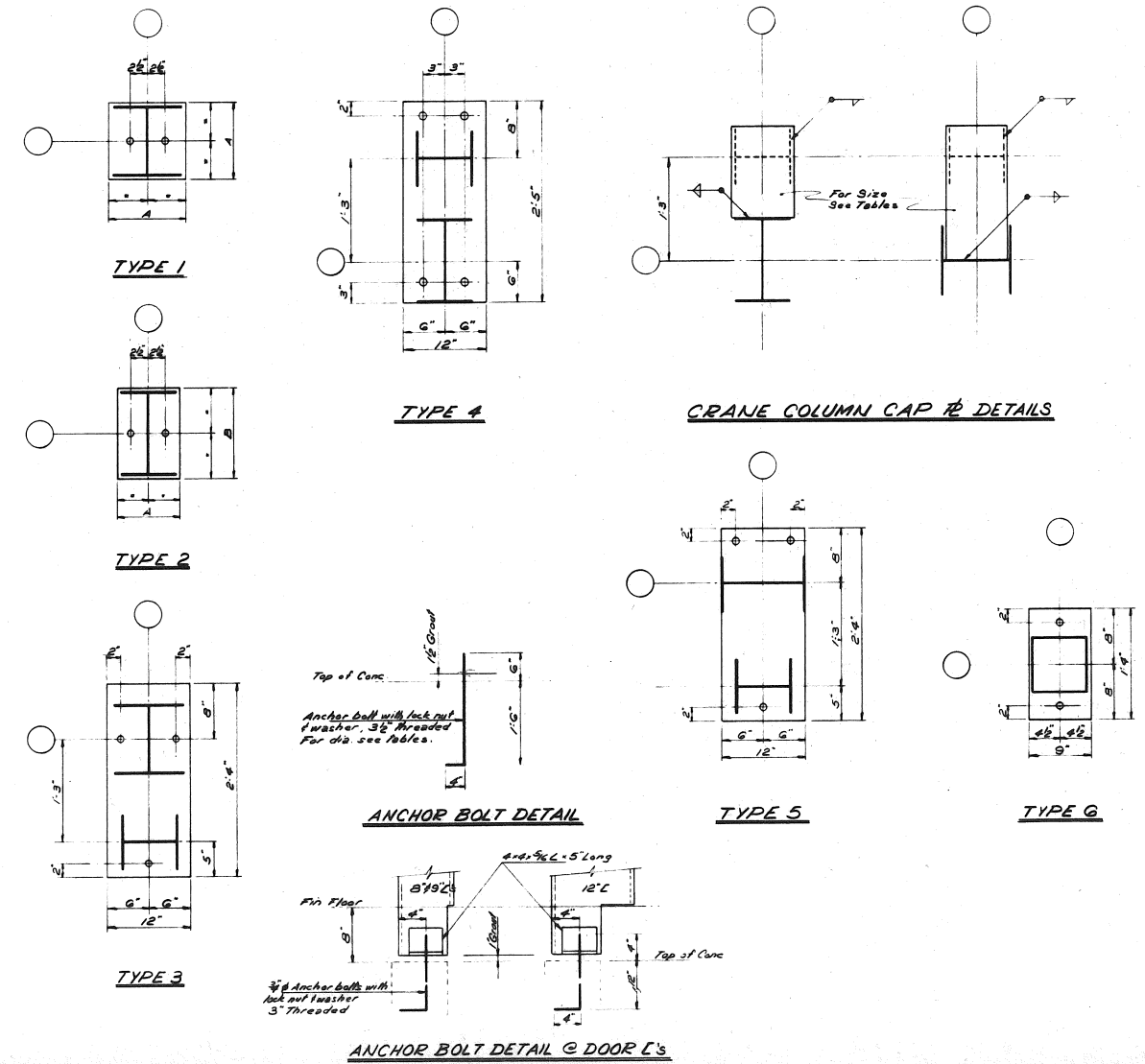
STRUCTURAL STEEL

drawing title: SECTIONS

designed by: C.S.L.	checked by: C.S.L.	date: DEC 14, 73
drawn by: F.J.W.	approved by: T.J.S.	
scale: 3/8" = 1'-0"	draw status:	drawing number: 5473-S10
project number: 5473		rev. no.: F

COLUMN LOCATION	COLUMN														SCHEDULE																						
	A3	A5	A6	A7	A8, C8, E8	A9, A10, A11, A12	A13	A13, A14, D3, D4, D13	A13G	B1, B4, B2	B3	B4	B5	C5	C6	C7	C8, C10, C11, C12	D1, D1G, D6	D14	E1, E1G	E2, E4, E6, E7	E9, E11	E10, E12	E13	E14	E15	F1, F1G	G1	G2, G4, G5, G7, G14, G15	G11	G16	H1	H2	H4, H6, H9, H10	H11	H12	H13
T.O.S. EL. 691.26	[Diagram showing column locations and elevations]														[Diagram showing column locations and elevations]																						
T.O.S. EL. 677.96	[Diagram showing column locations and elevations]														[Diagram showing column locations and elevations]																						
FIN. FL. EL. 659.26	[Diagram showing column locations and elevations]														[Diagram showing column locations and elevations]																						
ELEVATION	[Values for columns A3-A14]														[Values for columns C8-C15]																						
UNDERSIDE BASE #	[Values for columns A3-A14]														[Values for columns C8-C15]																						
BASE #	[Values for columns A3-A14]														[Values for columns C8-C15]																						
LOADS P _y	[Values for columns A3-A14]														[Values for columns C8-C15]																						
ANCHOR BOLTS	[Values for columns A3-A14]														[Values for columns C8-C15]																						

COLUMN LOCATION	H16	H1	H13	K1	K2	K4, K6, K7, K8, K10, K11, K12	K13	E3	C13, B13	A113	A114, A115, A116, A117, A118, A119, A120	G13	H7	G12	
T.O.S. EL. 691.26	[Diagram showing column locations and elevations]														
T.O.S. EL. 677.96	[Diagram showing column locations and elevations]														
FIN. FL. EL. 659.26	[Diagram showing column locations and elevations]														
ELEVATION	[Values for columns H16-H13]														
UNDERSIDE BASE #	[Values for columns H16-H13]														
BASE #	[Values for columns H16-H13]														
LOADS P _y	[Values for columns H16-H13]														
ANCHOR BOLTS	[Values for columns H16-H13]														



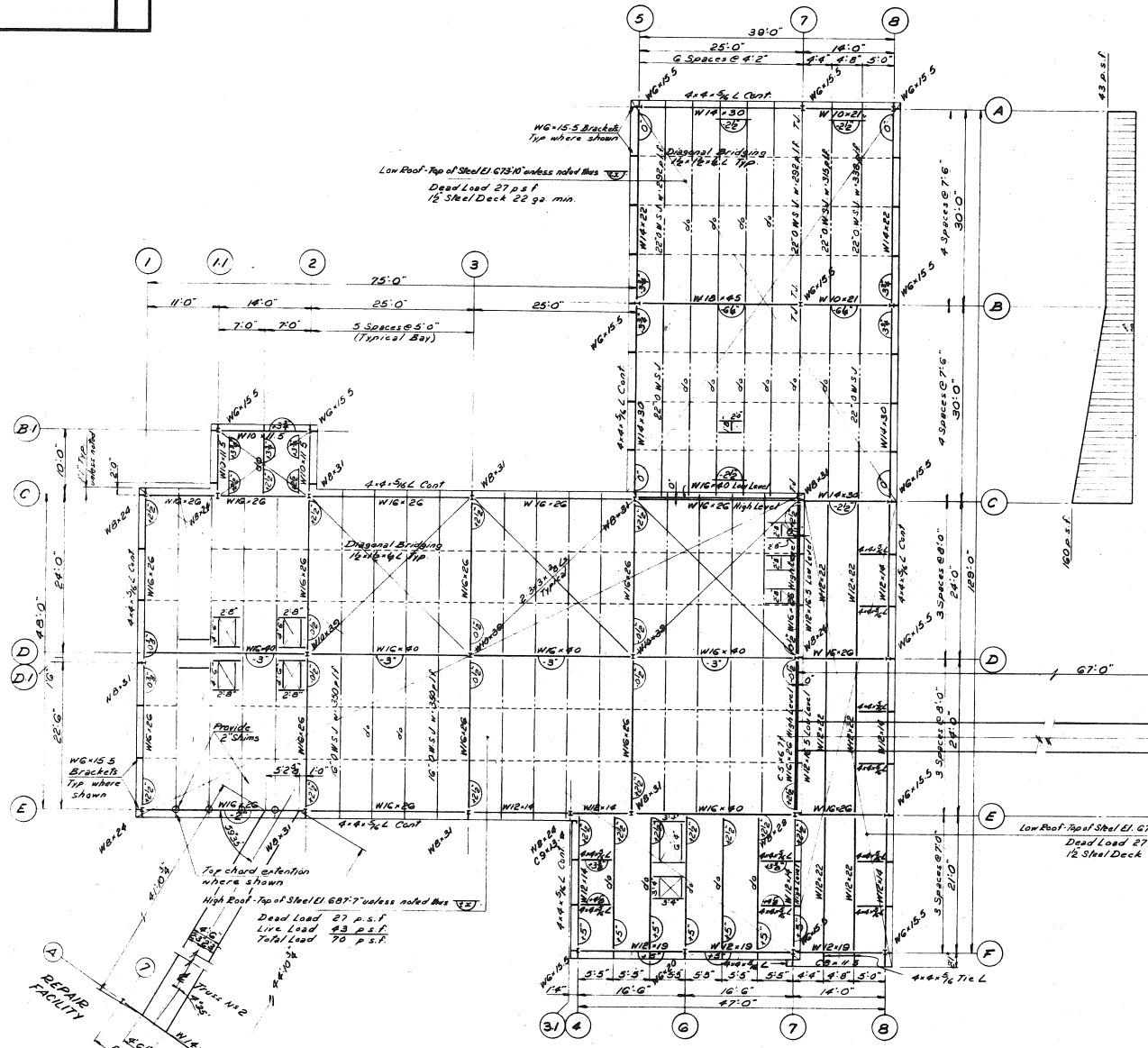
A	A detail no.
B	B location drawing no.
C	C drawing no.

Notes and reference drawings

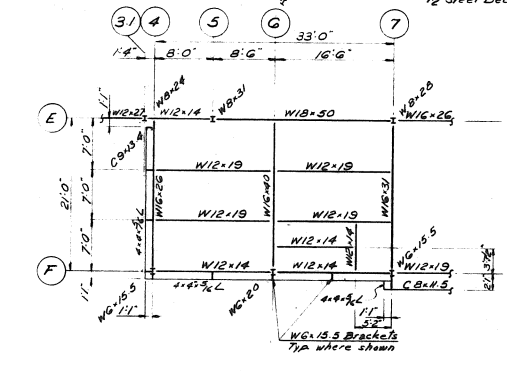
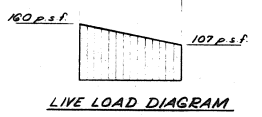
REV.	DATE	DESCRIPTION	DESIGNED	CHECKED	APPROVED
1	1973	ISSUED FOR GEN. CONTR. L.S.			
2	1973	Cap & detail notes revised			
3	1973	Issued for Reference with General Contract Tender			
4	1973	Cap & detail notes revised			
5	1973	General Revision & Additions			
6	1973	Addendum #1			

COLE, SHERMAN & ASSOC. LIMITED
TORONTO, ONTARIO

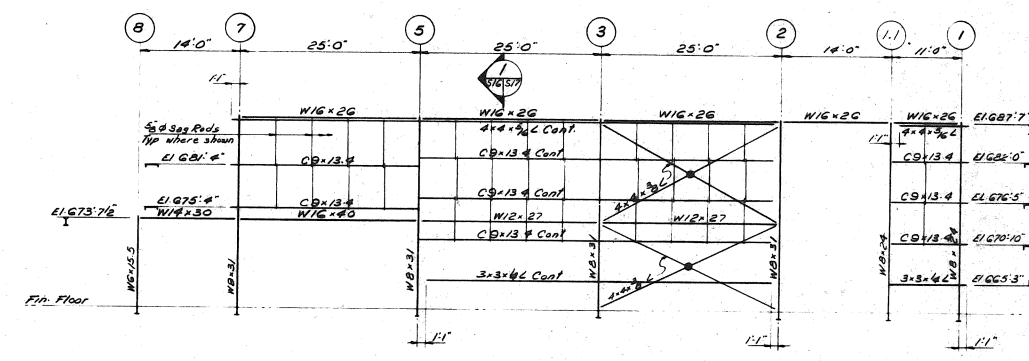
ONTARIO NORTHLAND RAILWAY	
NORTH BAY YARD	
CONSOLIDATION OF REPAIR FACILITIES	
REPAIR FACILITY	
STRUCTURAL STEEL	
drawing title	
COLUMN SCHEDULE	
designed by C.S.L.	checked by [Signature]
drawn by F.L.W.	approved by T.J.S.
scale N.T.S.	drawing number
project number 5473	5473-S11
date DEC 14, 73	rev. no. F



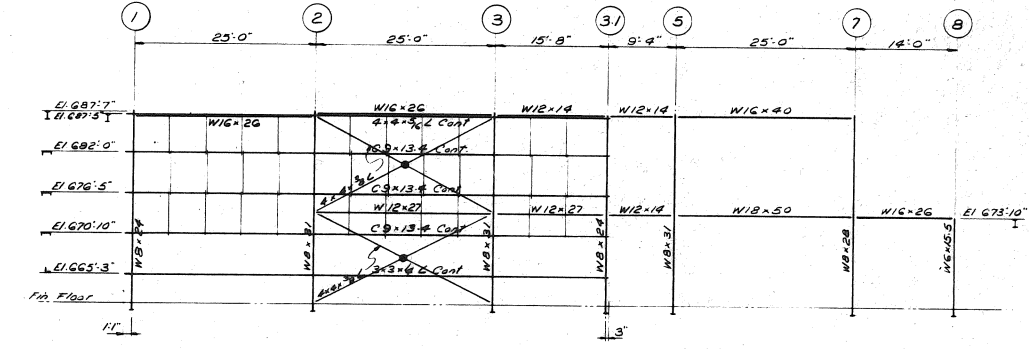
ROOF FRAMING PLAN
 1/2 Steel Deck 22 ga. min. - High roof.



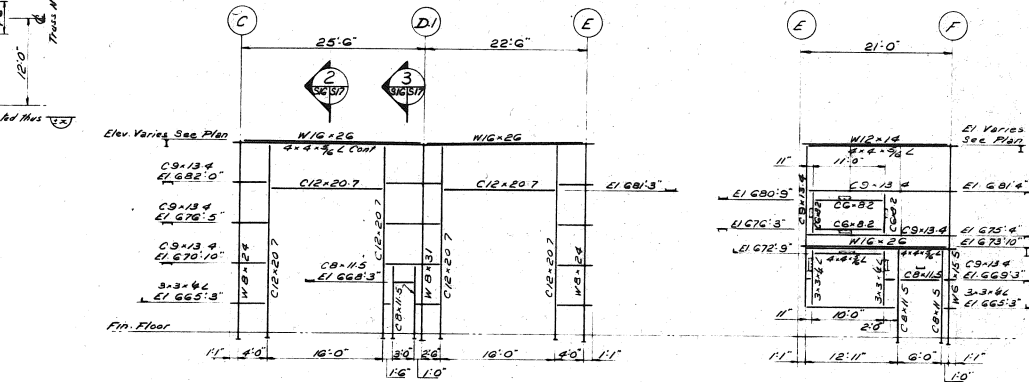
MECHANICAL FLOOR FRAMING PLAN
 Top of Steel El. 673.10
 Live Load 100 p.s.f.
 Dead Load 70 p.s.f.
 Total Load 170 p.s.f.



ELEVATION LINE C

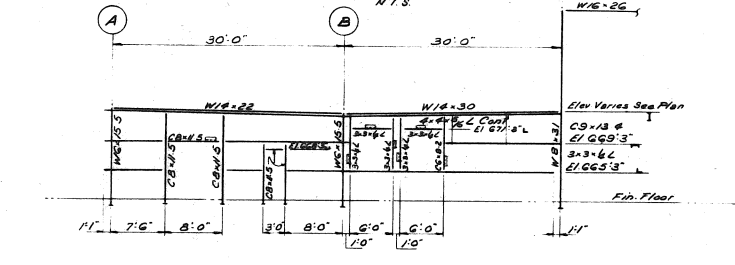


ELEVATION LINE E

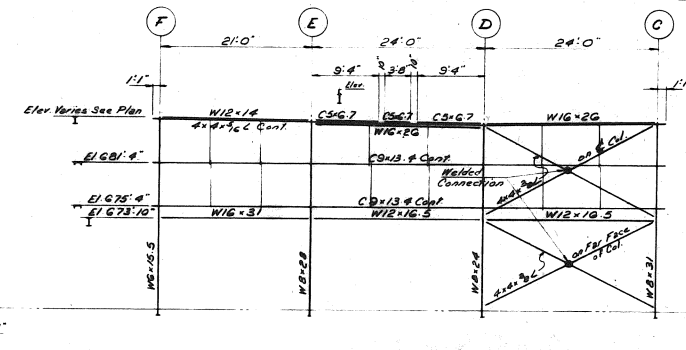


ELEVATION LINE I

ELEVATION LINE 4

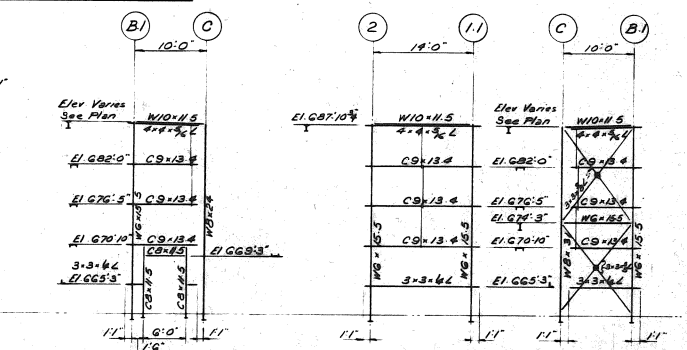


ELEVATION LINE 5

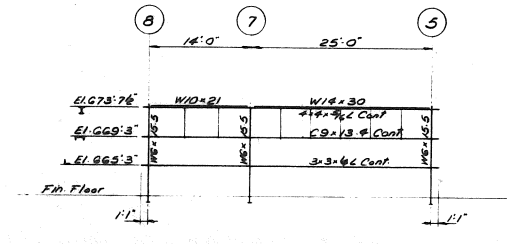


ELEVATION LINE 7

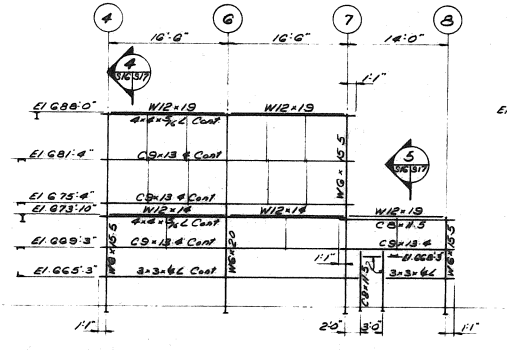
ELEVATION LINE B



ELEVATION LINE 1-1



ELEVATION LINE A



ELEVATION LINE F

ELEVATION LINE B.1

		<p>A detail no. B location drawing no. C drawing no.</p>																														
<p>Notes and reference drawings: For General Notes see Aug 5473-S1. For details of Trusses M/F 1 & 2 see Aug 5473-S17. All roof openings framed with 3-3 x 4 Ls.</p>																																
<table border="1"> <tr> <td>D 0574</td> <td>ISSUED FOR GEN. CONTR.</td> <td>A.F.D.</td> <td>C.V.</td> <td>T.S.</td> </tr> <tr> <td>E 0574</td> <td>ISSUED FOR REFERENCE WITH GENERAL CONTRACT TENDER</td> <td></td> <td></td> <td></td> </tr> <tr> <td>F 0374</td> <td>ADD'D DRAWING ADD'L MEMO'S</td> <td>F.I.W.</td> <td>C.S.L.</td> <td>T.J.S.</td> </tr> <tr> <td>G 0274</td> <td>FOR AMENDMENTS ADD'D</td> <td></td> <td></td> <td></td> </tr> <tr> <td>H 0274</td> <td>FOR GENERAL REVISIONS</td> <td>F.I.W.</td> <td>S.A.</td> <td>T.J.S.</td> </tr> <tr> <td>no.</td> <td>date</td> <td>drawn</td> <td>checked</td> <td>approved</td> </tr> </table>			D 0574	ISSUED FOR GEN. CONTR.	A.F.D.	C.V.	T.S.	E 0574	ISSUED FOR REFERENCE WITH GENERAL CONTRACT TENDER				F 0374	ADD'D DRAWING ADD'L MEMO'S	F.I.W.	C.S.L.	T.J.S.	G 0274	FOR AMENDMENTS ADD'D				H 0274	FOR GENERAL REVISIONS	F.I.W.	S.A.	T.J.S.	no.	date	drawn	checked	approved
D 0574	ISSUED FOR GEN. CONTR.	A.F.D.	C.V.	T.S.																												
E 0574	ISSUED FOR REFERENCE WITH GENERAL CONTRACT TENDER																															
F 0374	ADD'D DRAWING ADD'L MEMO'S	F.I.W.	C.S.L.	T.J.S.																												
G 0274	FOR AMENDMENTS ADD'D																															
H 0274	FOR GENERAL REVISIONS	F.I.W.	S.A.	T.J.S.																												
no.	date	drawn	checked	approved																												
<p>revisions</p>																																
<p>COLE, SHERMAN & ASSOC. LIMITED TORONTO, ONTARIO</p>																																
<p>ONTARIO NORTHLAND RAILWAY NORTH BAY YARD CONSOLIDATION OF REPAIR FACILITIES</p>																																
<p>PAINT SHOP</p>																																
<p>STRUCTURAL STEEL</p>																																
<p>Drawing title: FRAMING PLANS AND ELEVATIONS</p>																																
<p>designed by S.A. C.S.L.</p>	<p>checked by T.J.S.</p>	<p>date FEB. 11, 1974</p>																														
<p>drawn by F.J.W.</p>	<p>approved by T.J.S.</p>	<p>scale 1/8" = 1'-0"</p>																														
<p>project number 5473</p>	<p>drawing number 5473-S16</p>	<p>rev. no. D</p>																														

