

APPENDIX I

Consultation Record

Master Contact List

Title	First Name	Last Name	Position/Title	Department	Agency/Company	Main Address 1	Main Address 2	City	Prov.	Postal Code	e-mail	Phone	Previously Engaged? (Y/N)
Federal Agencies													
Sir/Madam	General Inbox			Fisheries Protection Program	Fisheries and Oceans Canada	867 Lakeshore Road		Burlington	ON	L7S 1A1	FisheriesProtection@dfo-mpo.gc.ca	1-855-852-8320	No
Sir/Madam	General Inbox			Public Inquiries Centre	Environment and Climate Change Canada	200 Sacré-Coeur Blvd	Fontaine Building 12th Floor	Gatineau	QC	K1A 0H3	enviroinfo@ec.gc.ca		No
Sir/Madam	General Inbox			Ontario Office	Impact Assessment Agency of Canada	55 York Street	6th Floor	Toronto	ON	M5J 1R7	ontarioregion-regiondontario@iaac-aeic.gc.ca	416-952-1576	No
Sir/Madam	General Inbox		Enforcement Officer	Ontario Region	Canadian Transportation Agency	4900 Yonge Street	Suite 300	Toronto	ON	M2N 6A5	info@otc-cta.gc.ca	416-952-7895	No
Sir/Madam	General Inbox			General Enquiries	Transport Canada	330 Sparks Street		Ottawa	ON	K1A 0N5	questions@tc.gc.ca	613-990-2309	No
Sir/Madam	General Inbox			General Inquiries	Parks Canada	30 Victoria Street		Gatineau	QC	J8X 0B3	information@pc.gc.ca	1-888-773-8888	No
Provincial Agencies													
Ms.	Karla	Barboza	Team Lead, Heritage	Citizenship, Inclusion and Heritage Division, Heritage Branch, Heritage Planning Unit	Ministry of Citizenship and Multiculturalism	400 University Avenue	5th Floor	Toronto	ON	M7A 2R9	Karla.Barboza@ontario.ca	416-660-1027	No
Ms.	Laura	Hatcher	Heritage Advisor	Heritage Branch/Citizenship, Inclusion and Heritage Division	Ministry of Citizenship and Multiculturalism	400 University Avenue	5th Floor	Toronto	ON	M7A 2R9	Laura.E.Hatcher@ontario.ca	437-239-3404	
Mr.	James	Hamilton	Manager	Heritage Branch/Citizenship, Inclusion and Heritage Division	Ministry of Citizenship and Multiculturalism	400 University Avenue	5th Floor	Toronto	ON	M7A 2R9	James.Hamilton@ontario.ca	416-995-8404	
Ms.	Kathleen	O'Neill	Director	Environmental Assessment and Permissions Division, Environmental Assessment Branch	Ministry of Environment, Conservation and Parks	135 St. Clair Avenue West	1st Floor	Toronto	ON	M4V 1P5	Kathleen.Oneill@ontario.ca	647-287-5664	No
Ms.	Solange	Desautels	Supervisor	Environmental Assessment and Permissions Division, Environmental Assessment Branch	Ministry of Environment, Conservation and Parks	135 St. Clair Avenue West	1st Floor	Toronto	ON	M4V 1P5	Solange.Desautels@ontario.ca	416-992-5867	
Ms.	Cindy	Batista	Special Project Officer	Environmental Assessment and Permissions Division, Environmental Assessment Branch	Ministry of Environment, Conservation and Parks	135 St. Clair Avenue West	1st Floor	Toronto	ON	M4V 1P5	Cindy.Batista@ontario.ca	437-248-0058	
Ms.	Nikki	Boucher	Regional Species at Risk Specialist	Land and Water Division, Species at Risk Branch, Permissions Section	Ministry of Environment, Conservation and Parks	3767 Highway 69 South		Sudbury	ON	P3G 1E7	nikki.boucher@ontario.ca	705-280-6887	No
Mr.	Greg	Ault	Manager	Drinking Water and Environmental Compliance Division, Regional Offices, Northern Region, Timmins District Office	Ministry of Environment, Conservation and Parks	5520 Highway 101 East	P.O. Bag 3080	South Porcupine	ON	P0N 1H0	greg.ault@ontario.ca	705-492-4673	No
Ms.	Charlene	Cressman	Manager	Planning and Growth Division, Planning Policy Branch, Planning Coordination Unit	Ministry of Municipal Affairs and Housing	777 Bay Street	College Park 13th Floor	Toronto	ON	M7A 2J3	charlene.cressman@ontario.ca	416-418-4643	No
Ms.	Leah	Schmidt	Manager	Northern Development Division, Regional Economic Development Branch, Area Teams, Timmins and Area	Ministry of Northern Development	5520 Highway 101 East	P.O. Bag 3080	South Porcupine	ON	P0N 1H0	leah.schmidt@ontario.ca	705-363-6508	No
Mr.	Pierre	Bousquet	Regional Land Use Geologist Northeast Region	Mines and Minerals Division	Ministry of Mines	5520 Hwy 101 East, E-Wing		South Porcupine	ON	P0N 1H0	pierre.bousquet@ontario.ca	705-465-0369	No
Ms.	Jennifer	Telford	Regional Planner	Northeast Region, Ministry of Natural Resources, Land Use Planning and Strategic Issues	Ministry of Natural Resources and Forestry	5520 Highway 101 East	P.O. Bag 3080	South Porcupine	ON	P0N 1H0	jennifer.telford@ontario.ca	437-833-3841	No
Ms.	Natalie	Strachan	Team Leader	Transit Capital and Operations Branch Capital Investments Office	Ministry of Transportation	College Park 30th Flr, 777 Bay St		Toronto	ON	M7A 2J8	Natalie.Strachan@ontario.ca	437-882-8767	
Ms.	Jillian	Soule	Manager	Transit Capital and Operations Branch Capital Investments Office	Ministry of Transportation	College Park 30th Flr, 777 Bay St		Toronto	ON	M7A 2J9	Jillian.Soule@ontario.ca	519-830-5659	
Mr.	Richard	Schveighardt	Director	Real Estate, Realty Project and Contract Management	Infrastructure Ontario	1 Dundas Street West	Suite 2000	Toronto	ON	M5G 1Z3	richard.schveighardt@infrastructureontario.ca	226-780-1484	No
Mr.	Wayne	Kelly	Director	Heritage Programs & Operations	Ontario Heritage Trust	10 Adelaide Street East		Toronto	ON	M5C 1J3	wayne.kelly@heritagetrust.on.ca	416-882-5610	No
Conservation Authorities													
Mr.	David	Vallier	General Manager		Mattagami Region Conservation Authority	100 Lakeshore Road		Timmins	ON	P4N 8R5	David.Vallier@mattagamiregion.ca	705-360-2692 ext. 7482	No
Ms.	Crystal	Percival	DWSP Lead/Planner		Mattagami Region Conservation Authority	100 Lakeshore Road		Timmins	ON	P4N 8R5	Crystal.Percival@mattagamiregion.ca	705-360-2692 ext. 7417	No

Title	First Name	Last Name	Position/Title	Department	Agency/Company	Main Address 1	Main Address 2	City	Province	Postal Code	email	Phone	Previously Engaged? (Y/N)
Single/Upper Tier Municipality													
Mr.	Steph	Palmateer	Director	Community Services & City Clerk	City of Timmins	220 Algonquin Bloulevard East		Timmins	ON	P4N 1B3	Steph.Palmateer@timmins.ca	705-360-2613	Yes - previously consulted City of Timmins
Ms.	Cindy	Welsh	Manager	Planning	City of Timmins	220 Algonquin Bloulevard East		Timmins	ON	P4N 1B3	Cindy.Welsh@timmins.ca	705-360-2624	Yes - previously consulted City of Timmins Attended PIC #1
Mr.	Ken	Krcel	Director	Public Works	City of Timmins	220 Algonquin Bloulevard East		Timmins	ON	P4N 1B3	Ken.Krcel@timmins.ca		Yes - previously consulted City of Timmins Attended PIC #1
Mr.	Scott	Tam	Director	Growth & Infrastructure	City of Timmins	220 Algonquin Bloulevard East		Timmins	ON	P4N 1B3	Scott.Tam@timmins.ca		Yes - previously consulted City of Timmins Attended PIC #1
Sir/Madame	General Inbox			Engineering	City of Timmins	220 Algonquin Bloulevard East		Timmins	ON	P4N 1B3	engineering@timmins.ca	705-360-2645	Yes - previously consulted City of Timmins
Ms.	Jean	Carriere	Director	Emergency Medical Services (EMS)	City of Timmins	500 Algonquin Bloulevard East		Timmins	ON	P4N 1B7	EMS@cdssab.on.ca	705-266-1208	No
Sir/Madame	General Inbox			Fire Department	City of Timmins	133 Cedar Street South		Timmins	ON	P4N 2G9	firedept@timmins.ca	705-360-2626	No
Sir/Madame	General Inbox			Police Service	City of Timmins	185 Spruce Street South		Timmins	ON	P4N 2M7	police@timmins.ca	705-264-1201	No
Ms.	Nicola	Alexander	Committee Member	Municipal Heritage Committee	City of Timmins	220 Algonquin Bloulevard East		Timmins	ON	P4N 1B3	nicola.alexander@timmins.ca	705-360-2600 x 3335	Added following Timmins Community Engagment Event on Sept 29, 2023
Mr.	Scott	Collins	Supervisor	Engineering	City of Timmins	220 Algonquin Bloulevard East		Timmins	ON	P4N 1B3	Scott.Collin@timmins.ca		Added following PIC #1 on March 14, 2024
Ms.	Noella	Rinaldo	Director	Community Economic Development	City of Timmins	220 Algonquin Bloulevard East		Timmins	ON	P4N 1B3	noella.rinaldo@timmins.ca	705-360-2600 x 7081	Added following PIC #1 on March 14, 2024
Ms.	Kelsey	Luxton	Specialist	Marketing and Communications	Timmins Economic Development Corporation	1-130 Spruce Street South		Timmins	ON	P4N 2M5	kelsey.luxton@timmins.ca	705-360-2656	Added following PIC #1 on March 14, 2024
Ms.	Brenda	Camirand	Director	Business Development and Retention	Timmins Economic Development Corporation	1-130 Spruce Street South		Timmins	ON	P4N 2M5	brenda.camirand@timmins.ca	705-360-2657	Added following PIC #1 on March 14, 2024
Ms.	Louise	Straatman	Specialist	Business Development and Retention	Timmins Economic Development Corporation	1-130 Spruce Street South		Timmins	ON	P4N 2M5	louise.straatman@timmins.ca	705-360-2657	Added following PIC #1 on March 14, 2024
Mr.	Jeremy	Elomaa	Specialist	Business Development and Retention	Timmins Economic Development Corporation	1-130 Spruce Street South		Timmins	ON	P4N 2M5	jeremy.elomaa@timmins.ca	705-262-9973	Added following PIC #1 on March 14, 2024
Mr.	Lorne	Feldman	Councillor	Ward 2	City of Timmins	220 Algonquin Bloulevard East		Timmins	ON	P4N 1B3	lorne.feldman@timmins.ca	705-360-2611	Added following PIC #1 on March 14, 2025
School Boards													
Madame	René	Gaudreau		Service direction: Communication and technology management	Grandes Rivières Catholic District School Board	896 Riverside Drive		Timmins	ON	P4N 3W2	rene.gaudreau@cscdgr.education	705 267-1421	No Attended PIC #1
Transportation/Transit Agencies													
Mr.	Marcel	Côté	Manager	Transit Operations	Timmins Transit	220 Algonquin Boulevard East		Timmins	ON	P4N 1B3	marcel.cote@timmins.ca	705-360-2600 x 3500	Yes - previously consulted City of Timmins Attended PIC #1

Title	First Name	Last Name	Position/Title	District	Main Address 1	Main Address 2	City	Province	Postal Code	e-mail	Phone	Previously Engaged? (Y/N)
Elected Officials (Municipal)												
Ms.	Michelle	Boileau	Mayor	City of Timmins	220 Algonquin Boulevard East		Timmins	ON	P4N 1B3	mayor@timmins.ca	705-360-2611	Yes - identified on previous contact list
Mr.	Lorne	Feldman	Councilor - Ward 2	City of Timmins	220 Algonquin Boulevard East		Timmins	ON	P4N 1B3	lorne.feldman@timmins.ca	705-360-2611	Yes - identified on previous contact list
Mr.	John	Curley	Councilor - Ward 4	City of Timmins	220 Algonquin Boulevard East		Timmins	ON	P4N 1B3	john.curley@timmins.ca	705-360-2611	Yes - identified on previous contact list
MPPs												
Mr.	George	Pirie	MPP	Timmins	54 Waterloo Road	Unit 1	Timmins	ON	P4N 8P3	george.pirie@pc.ola.org	705-268-6400	Yes - identified on previous contact list

Title	First Name	Last Name	Position/Title	Department	Agency/Company	Main Address 1	Main Address 2	City	Province	Postal Code	email	Phone	Previously Engaged? (Y/N)
Third Party Utilities													
Sir/Madame					Bell						bell.moc@telecon.ca		No
Ms.	Tracey	Trevisan			Enbridge Gas						Tracey.Trevisan@enbridge.com	1-877-640-8665	No
Mr.	Shane	Korbely			Enbridge Gas						Shane.Korbely@enbridge.com		
Mr.	Adam	Ranger	Supervisor Distribution Engineering Tech		Hydro One			Timmins	ON	P4N 1B3	Adam.Ranger@HydroOne.com	705-570-2488	No
Mr.	Scott	Collin	Acting Manager of Engineering	Municipal Water Municipal Sanitary and Storm Sewer	City of Timmins	220 Algonquin Bloulevard East		Timmins	ON	P4N 1B3	scott.collin@timmins.ca		No
Sir/Madame			GTEL Engineering		Northern Tel Limited		P.O. Box 1060	Timmins	ON	P4N 7H6	customerservice@gtel.ca		No
Sir/Madame					ONTERA		P.O. Box 628	North Bay	ON	P1B 8J5		1-888-566-8372	No

First Name	Last Name	Position/Title	Group	Main Address 1	Main Address 2	City	Province	Postal Code	e-mail	Phone	Previously Engaged? (Y/N)
Businesses											
Sir/Madame			Superior Propane	305 Falcon Street		Porcupine	ON	P0N 1C0	customerservice@superiorpropane.com	1-877-873-7467	No
Sir/Madame			Different Breed Pet Services Dog Training	609 Earl Street		Porcupine	ON	P0N 1C0		705-274-2282	No
Sir/Madame			Crevier	6161 King Street		Porcupine	ON	P0N 1C0		705-235-4324	No
Sir/Madame			Log Head Axe Mods	601 Lamarche Street		Porcupine	ON	P0N 1C0			No
Sir/Madame			Z Equipment Sales & Leasing	6075 King Street		Porcupine	ON	P0N 1C0		705-235-4888	No
Sir/Madame			George Westcott Trucking	6030 King Street		Porcupine	ON	P0N 1C0		705-235-5180	No
Ashley	Richard		Love Burns Candle Corp	306 Queen Street		Porcupine	ON	P0N 1C0		705-221-2422	No
Sir/Madame			Lori's Sewing Place	700 Falcon Street		Porcupine	ON	P0N 1C0		705-267-2739	No
Lise	Burley		Falcon Storage	660 Falcon Street		Porcupine	ON	P0N 1C0	liseburley@gmail.com	705-235-5836	No
Sir/Madame			AStateofRuins!	121 Kenneth Cresent		Porcupine	ON	P0N 1C0		705-579-2013	No
Sir/Madame			Bob's Lake Burger Bus	6811 ON-101		Porcupine	ON	P0N 1C0		705-266-8611	No
Community/Interest Groups											
Howie	Wilcox		Northeastern Ontario Rail Network						williamwilcox48@gmail.com		No
Lucille	Frith		Northeastern Ontario Rail Network						lakeofbays.lucille@gmail.com		No
General Inbox			Timmins Chamber		P.O. Box 986	Timmins	ON	P4N 7H6	info@timminschamber.on.ca		No
General Inbox			Timmins Snowmobile Club		P.O. Box 405	Timmins	ON		info@gotsnow.ca		No
Residents/General Public											

APPENDIX I1

Community Connection Event – September 2023

E-blast

From:
To:
Cc:
Subject: Northlander Passenger Rail Updates
Date: Thursday, December 14, 2023 4:49:06 PM

[EXTERNAL EMAIL]: This email originated from outside the organization. Do not click links or open attachments unless you recognize the sender and know the content is safe.

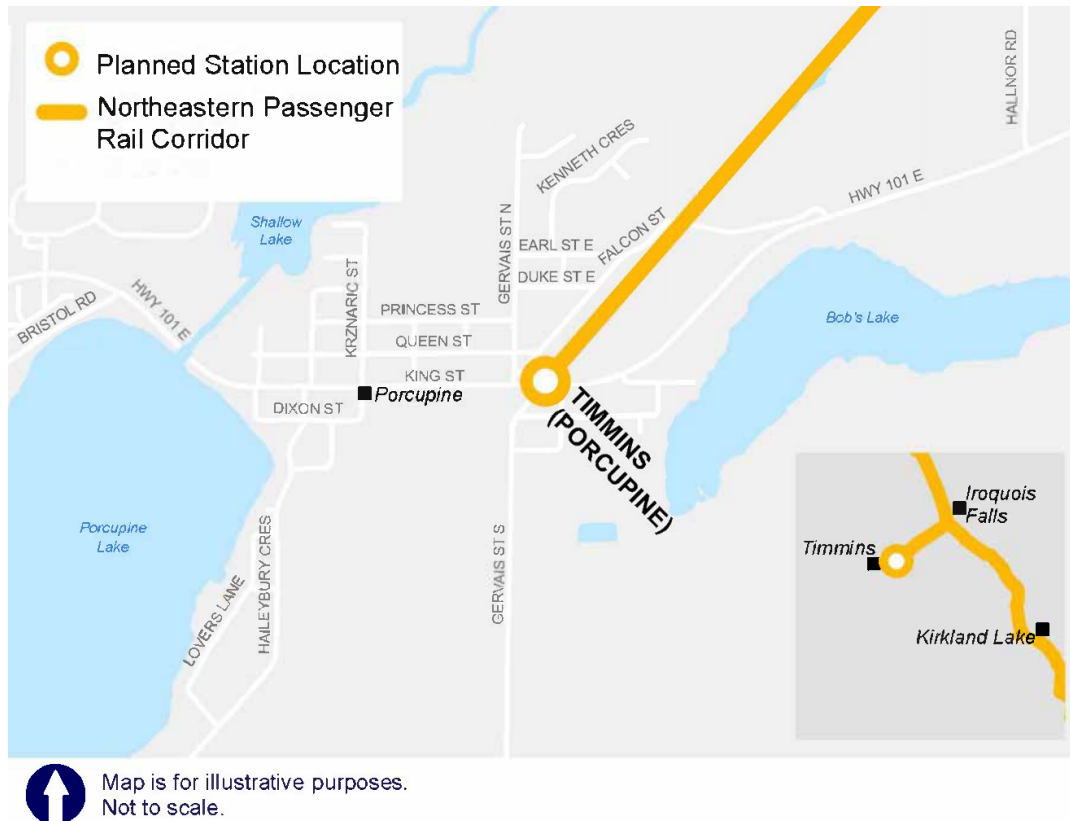
CAUTION - EXTERNAL EMAIL - Do not click links or open attachments unless you recognize the sender.



Ontario Northland

Ontario Northland is proud to provide efficient, safe, and reliable transportation services to, from and across Northern Ontario. As you may already be aware, the agency is reinstating Northlander passenger rail service between Toronto (Union Station) and Timmins, with a rail connection to Cochrane.

As part of the reinstatement of the Northlander service, Ontario Northland plans to construct a new station within the City of Timmins, just west of Bob's Lake. The new Timmins-Porcupine Station will include a train platform, station building, parking facilities, a pedestrian walkway, bus bays, and a municipal bus stop.



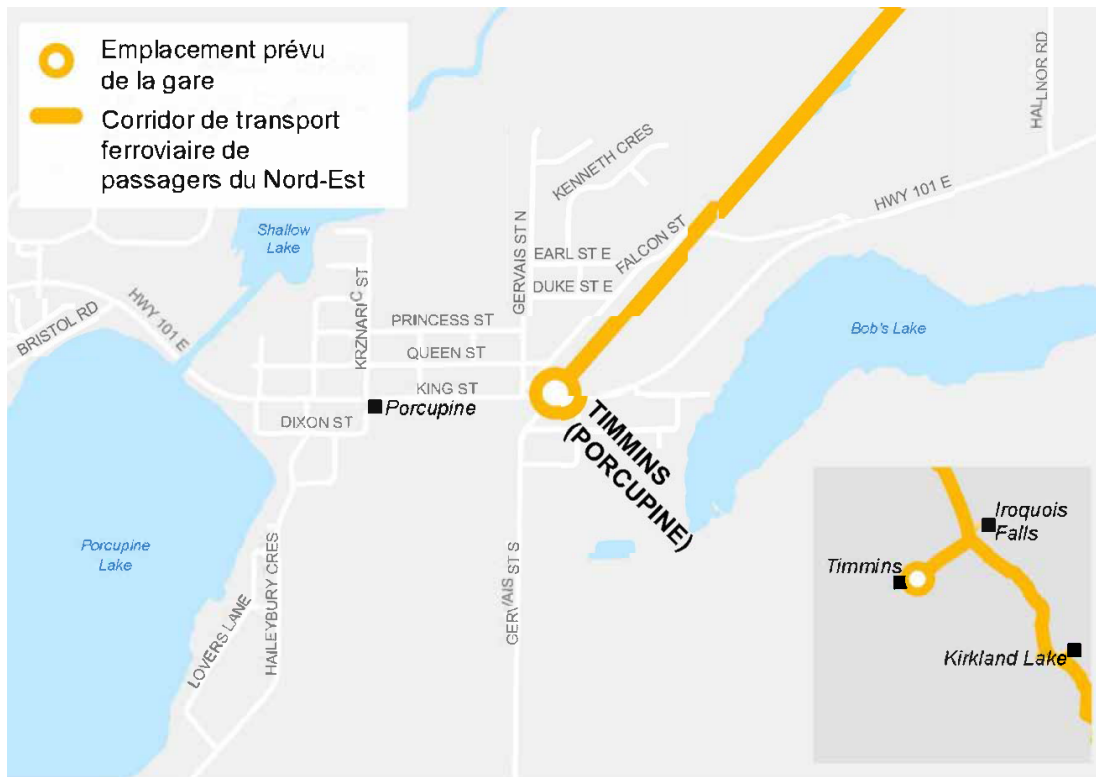
Ontario Northland is currently preparing engineering designs for the new station and carrying out a number of environmental studies. As part of the Environmental Assessment process, there will be upcoming opportunities for public stakeholders to review project information and provide feedback on the proposed Timmins-Porcupine Station.


Please be on the lookout for future announcements (via e-mail, project website updates, social media, etc.) from Ontario Northland for your opportunity to participate.

In the meantime, if you would like to receive information related to this project, please visit <https://ontarionorthland.ca/en/northlander-passenger-rail-updates> or contact pr@ontarionorthland.ca.

Ontario Northland est fière d'offrir des services de transport efficaces, sûrs et fiables à destination et en provenance du Nord de l'Ontario, ainsi qu'un peu partout dans cette région. Comme vous le savez peut-être déjà, Ontario Northland est en voie de rétablir le service de transport ferroviaire de passagers Northlander entre Toronto (gare Union) et Timmins, avec une liaison ferroviaire vers Cochrane.

Dans le cadre du rétablissement du service Northlander, Ontario Northland prévoit de construire une nouvelle gare dans la ville de Timmins, tout juste à l'ouest de Bob's Lake. La nouvelle gare de Timmins-Porcupine comprendra un quai, un bâtiment, des installations de stationnement, une voie piétonne, des zones d'arrêt d'autobus et un arrêt d'autobus municipal.



 La carte ne sert qu'à illustrer les lieux.
Elle n'est pas à l'échelle.

À l'heure actuelle, Ontario Northland s'emploie à préparer les concepts techniques de la nouvelle gare et à réaliser diverses études environnementales. Prochainement, dans le cadre du processus d'évaluation environnementale, les intervenants du public auront l'occasion d'examiner les renseignements relatifs au projet et de faire part de leurs commentaires sur la gare de Timmins-Porcupine qui est proposée.

Soyez à l'affût des annonces prochaines (courriel, mises à jour sur le site Web du projet, médias sociaux, etc.) de la part d'Ontario Northland pour voir comment vous pouvez participer à ces démarches.

Dans l'intervalle, si vous souhaitez recevoir des renseignements à propos de ce projet, veuillez consulter le site <https://ontarionorthland.ca/fr/presentation-du-train-de-passagers> ou écrire à l'adresse pr@ontarionorthland.ca.



 **Ontario Northland**

Copyright © 2023 Ontario Northland, All rights reserved.

Our mailing address is:
Ontario Northland
555 Oak St E

North Bay, ON P1B 8E3
Canada

[Add us to your address book](#)

Want to change how you receive these emails?

You can [update your preferences](#) or [unsubscribe from this list](#).

Social Media Postings



Ontario Northland

7,173 followers

2d • 🌐



We saw a lot of smiling faces at last week's first Northlander Community Connection event in Timmins! Attendees had the opportunity to share their thoughts and get all the updates for the (rail)road ahead.

NEXT STOPS: Matheson this Wednesday, October 4, and Cochrane on October 5.

Free to attend. Door prize. Drop-in anytime. All are welcome!

Visit our website for the full schedule & event details: <https://lnkd.in/gP5rFKnW>

#NorthlanderCommunityConnection #Northlander #BuildingOntario

--

Nous avons vu beaucoup de visages souriants lors du premier événement de la tournée de connexion communautaire du Northlander, qui a eu lieu la semaine dernière à Timmins! Les participants ont eu l'occasion de faire part de leurs réflexions et d'obtenir tous les nouveaux renseignements pertinents concernant la voie (fermée) à venir.

PROCHAINS ARRÊTS : Matheson, le mercredi 4 octobre, et Cochrane, le 5 octobre.

L'événement est gratuit. Il y aura des prix de présence. Tous et toutes sont les bienvenus!

Rendez-vous sur notre site web pour voir le programme complet et les détails sur les événements : <https://lnkd.in/gZB8aQuc>

#ConnexionCommunautaireNorthlandern #Northlander #BâtirOntario

[See translation](#)





Ontario Northland
7,173 followers
1w • 🌐



Today is the day!

We're in Timmins from 12:00 to 5:00 p.m. at the McIntyre Community Centre's Auditorium for our first stop of the Northlander Community Connection tour.

Come chat with us and provide input for future decisions related to the service.

Free to attend. Door prize. Drop-in anytime.

All are welcome!

[#NorthlanderCommunityConnection](#) [#Northlander](#) [#BuildingOntario](#)

--

C'est aujourd'hui le grand jour!

Nous sommes à Timmins, de midi à 17 h, à l'auditorium du Centre communautaire McIntyre, pour le premier arrêt de la tournée de connexion communautaire du Northlander.

Venez discuter avec nous et nous faire part de vos commentaires en vue d'orienter nos décisions à venir à propos du service.

L'événement est gratuit. Il y aura des prix de présence. Passez nous voir à n'importe quel moment.

Bienvenue à tous et toutes!

[#ConnexionCommunautaireNorthlandern](#) [#Northlander](#) [#BâtirOntario](#)

[See translation](#)





Ontario Northland

7,173 followers

1w · 🌐



Ontario Northland is proud to be working toward the reinstatement of passenger rail in Northeastern Ontario – and we want to hear from you!

We will be hosting 13 tradeshow-style community events along the Northlander route that will feature information about this new service. You can expect a sneak peek of the exterior design, rail safety, future job opportunities, and more.

FIRST STOP – Timmins!

📅 Friday, September 29 @ the Auditorium (McIntyre Community Centre)

🕒 12:00 - 5:00 p.m. (drop in any time)

👉 Free to attend and chance of winning a door prize. All are welcome!

To view upcoming events and details, please visit <https://lnkd.in/gP5rFKnW>

--

Ontario Northland est fière de travailler au rétablissement du transport ferroviaire de passagers dans le nord-est de l'Ontario - et nous souhaitons connaître votre opinion !

Nous sommes en mesure d'organiser 13 événements de genre foire communautaire le long du parcours du Northlander, qui présenteront des informations sur ce nouveau service. Vous pouvez vous attendre à un aperçu de la conception extérieure, de la sécurité ferroviaire, des futures possibilités d'emploi, et plus encore.

PREMIER ARRÊT - Timmins !

📅 Vendredi 29 septembre 2023 à l'auditorium (Centre communautaire McIntyre)

🕒 De 12 h à 17 h (en tout temps)

👉 Participation gratuite et possibilité de gagner un prix de présence. Tous sont les bienvenus !

Pour connaître les événements à venir et les détails, veuillez consulter le site

<https://lnkd.in/gZB8aQuc>

[See translation](#)





Ontario Northland

2d · 🌐



We saw a lot of smiling faces at last week's first Northlander Community Connection event in Timmins! Attendees had the opportunity to share their thoughts and get all the updates for the (rail)road ahead.

NEXT STOPS: Matheson this Wednesday, October 4, and Cochrane on October 5.

Free to attend. Door prize. Drop-in anytime. All are welcome!

Visit our website for the full schedule & event details:

<https://www.ontarionorthland.ca/.../northlander-passenger...>

#NorthlanderCommunityConnection #Northlander #BuildingOntario



👍❤️ 115

6 comments 4 shares

👍 Like

💬 Comment

🔗 Share



Ontario Northland

September 29 at 8:00 AM · 🌐



Today is the day!

We're in Timmins from 12:00 to 5:00 p.m. at the McIntyre Community Centre's Auditorium for our first stop of the Northlander Community Connection tour.

Come chat with us and provide input for future decisions related to the service.

Free to attend. Door prize. Drop-in anytime.

All are welcome!

[#NorthlanderCommunityConnection](#) [#Northlander](#) [#BuildingOntario](#)



👍❤️ 84

7 comments 19 shares



Like



Comment



Share



Ontario Northland

September 26 at 12:36 PM · 🌐



Ontario Northland is proud to be working toward the reinstatement of passenger rail in Northeastern Ontario – and we want to hear from you!

We will be hosting 13 tradeshow-style community events along the Northlander route that will feature information about this new service. You can expect a sneak peek of the exterior design, rail safety, future job opportunities, and more.

FIRST STOP – Timmins!

📅 Friday, September 29 @ the Auditorium (McIntyre Community Centre)

🕒 12:00 - 5:00 p.m. (drop in any time)

🎟️ Free to attend and chance of winning a door prize. All are welcome!

To view upcoming events and details, please visit <https://www.ontarionorthland.ca/.../northlander-passenger...>



👍❤️ 190

28 comments 94 shares



Like



Comment



Share

[Home](#) > [Ontario Northland Invites You to 'Connect' with the Northlander](#)



Ontario Northland Invites You to 'Connect' with the Northlander

Ontario Northland extends a warm invitation to all residents seeking to learn more about the future Northlander service at our Community Connection Event.

Attendees will have an opportunity to provide valuable feedback on the design and amenities of this future passenger rail service.

- Timmins – Friday, September 29 – McIntyre Community Centre (12 pm to 5 pm)
- Matheson – Wednesday, October 4 – Vern Miller Community Centre (4 pm to 7 pm)
- Cochrane – Thursday, October 5 – Tim Horton Event Centre (12 pm to 4 pm)
- Kirkland Lake – Thursday, October 12 – Heritage North – (2 pm to 6 pm)
- Englehart – Friday, October 13 – Ontario Northland Station (10 am to 2pm)
- Temagami – Wednesday, October 18 - Community Centre (12 pm to 5 pm)
- South River – Wednesday, October 25 - South River Machar Community Centre (Arena) (12 pm to 4 pm)
- Huntsville – Thursday, October 26 - Active Living Centre (12 pm to 4 pm)
- Bracebridge – Friday, October 27 - Bracebridge Memorial Arena (12 pm to 5 pm)
- North Bay – Friday, November 3 - North Bay Station (12 pm to 6 pm)
- Washago – Tuesday, November 7 - Washago Community Centre (12 pm to 5 pm)
- Gravenhurst – Wednesday, November 8 - Centennial Centre (12 pm to 4 pm)
- Temiskaming Shores – Friday, November 10 - Riverside Place (12 pm to 5pm)

Virtual Events

Event #1: Sunday, October 29, from 6:30 pm – 7:30 pm

[Register Here](#)

Event #2: Thursday, November 9 from 12 pm – 1 pm

[Register Here](#)

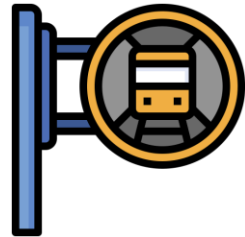
Display Boards/Panels

Introduction

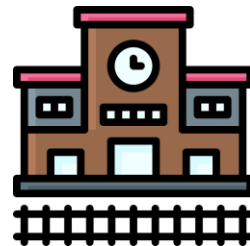
Ontario Northland is reinstating passenger rail service between Toronto (Union Station) and Northeastern Ontario via the Northeastern Passenger Rail (NEPR) Project. As per Option 2, in the Updated Initial Business Case, the NEPR will include passenger train service from Toronto to Timmins and will provide a rail connection from Timmins to Cochrane.



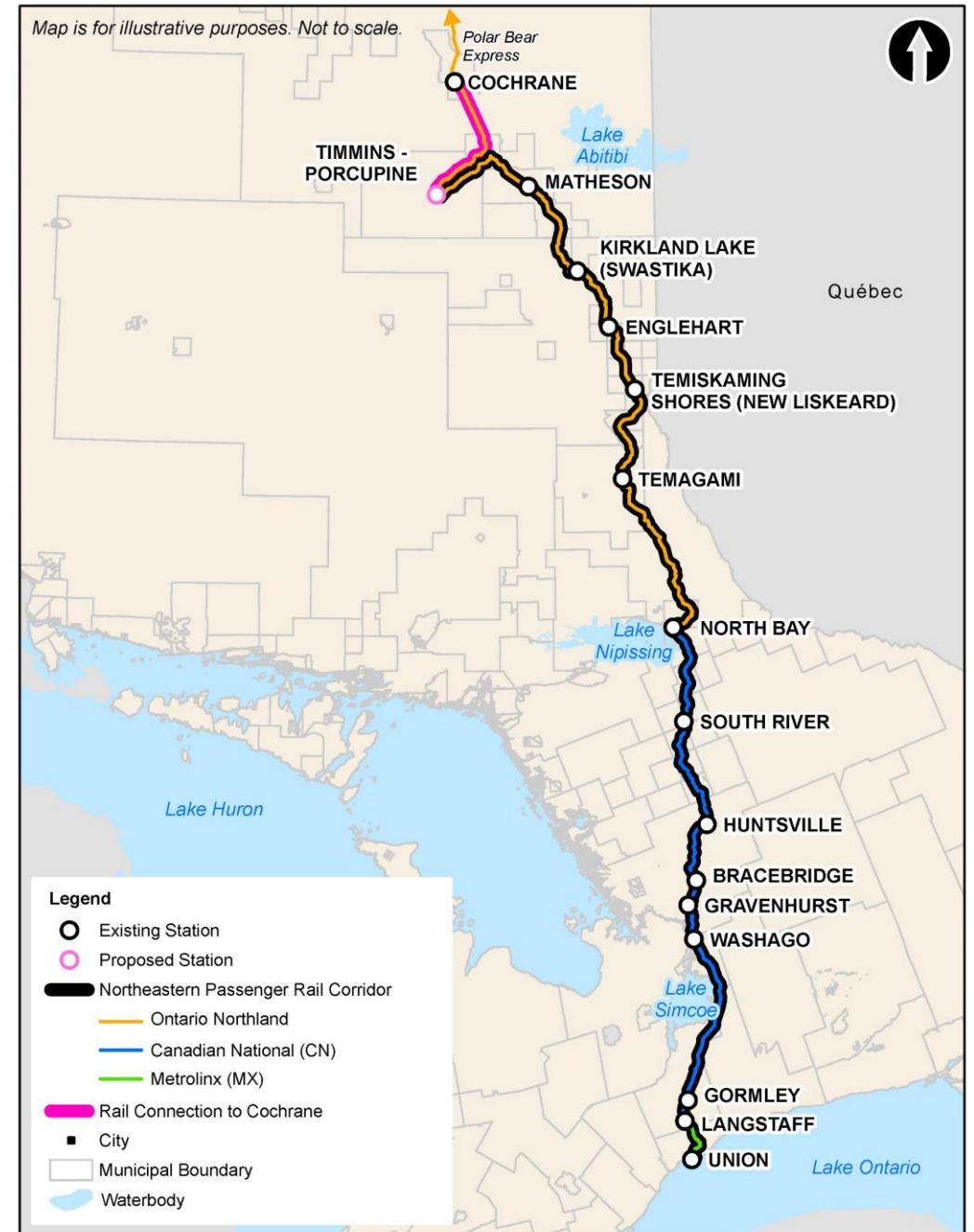
740km
of Rail Corridor



16
Station Stops

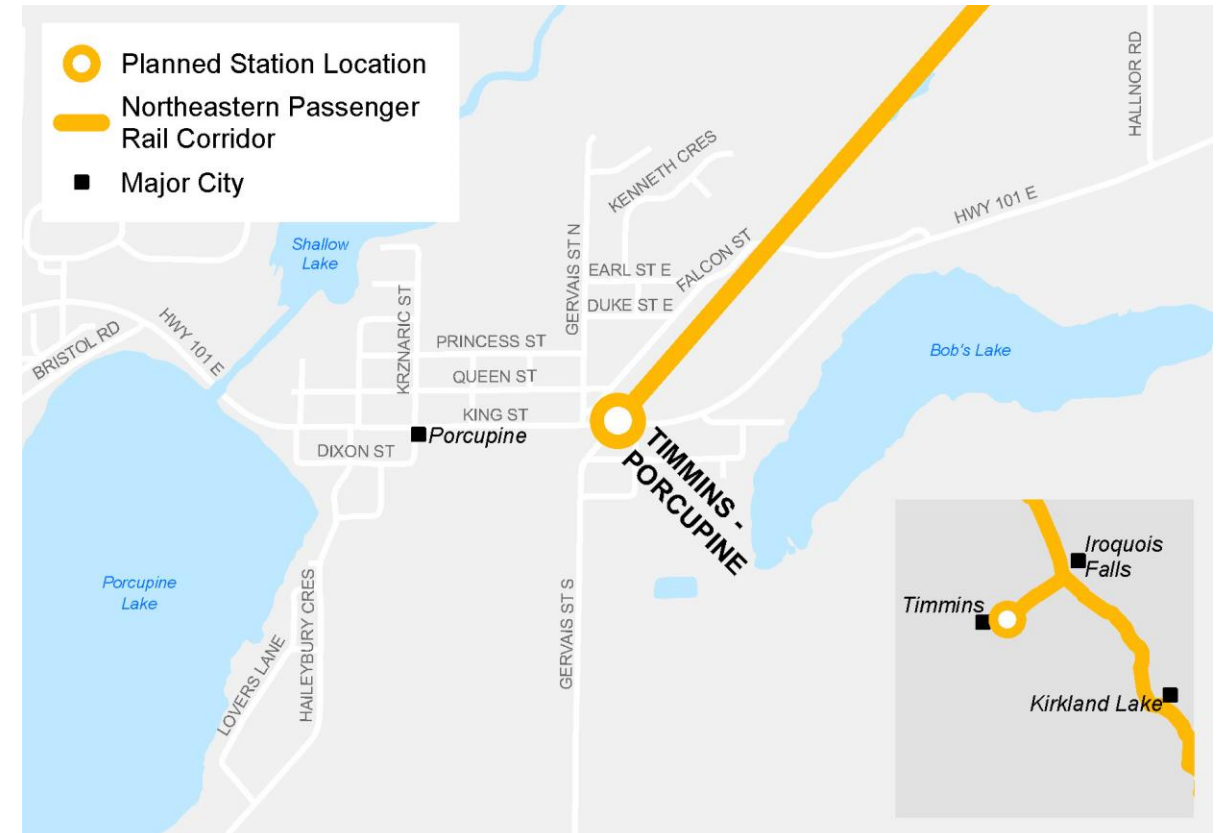


1
New Proposed
Station



Proposed Timmins-Porcupine Station

- The new Timmins-Porcupine station will include a train platform, station building, parking facilities, and pedestrian walkways.
- Situated along the NEPR Corridor (Ramore subdivision, segment extending west towards Timmins at Porquis Junction) between Matheson Station and Cochrane Station, within the City of Timmins.
- The planning for this project will protect for land that may be required for future construction of a Bus Storage and Maintenance Facility.

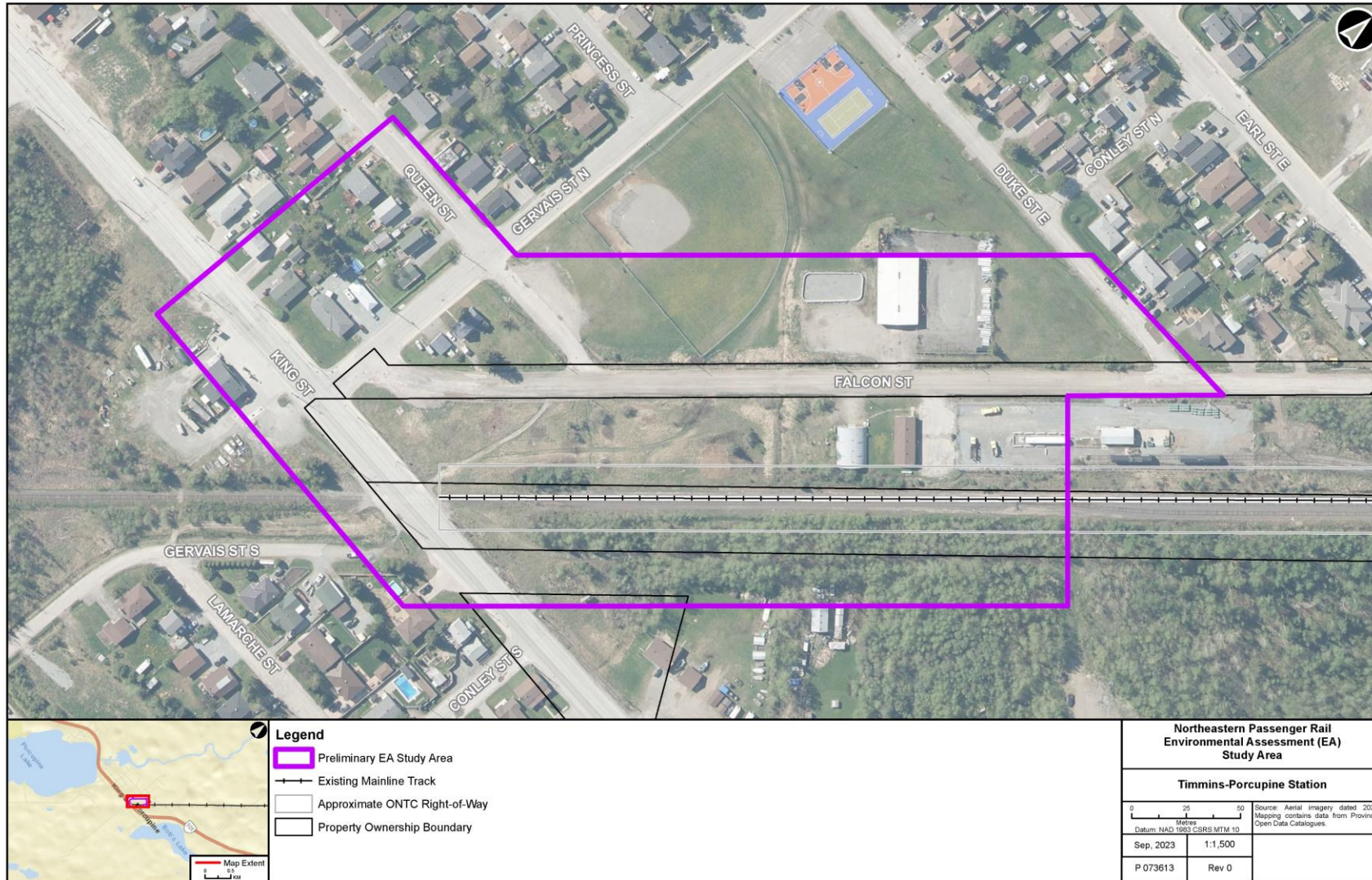


Map is for illustrative purposes.
Not to scale.

Proposed Timmins-Porcupine Station

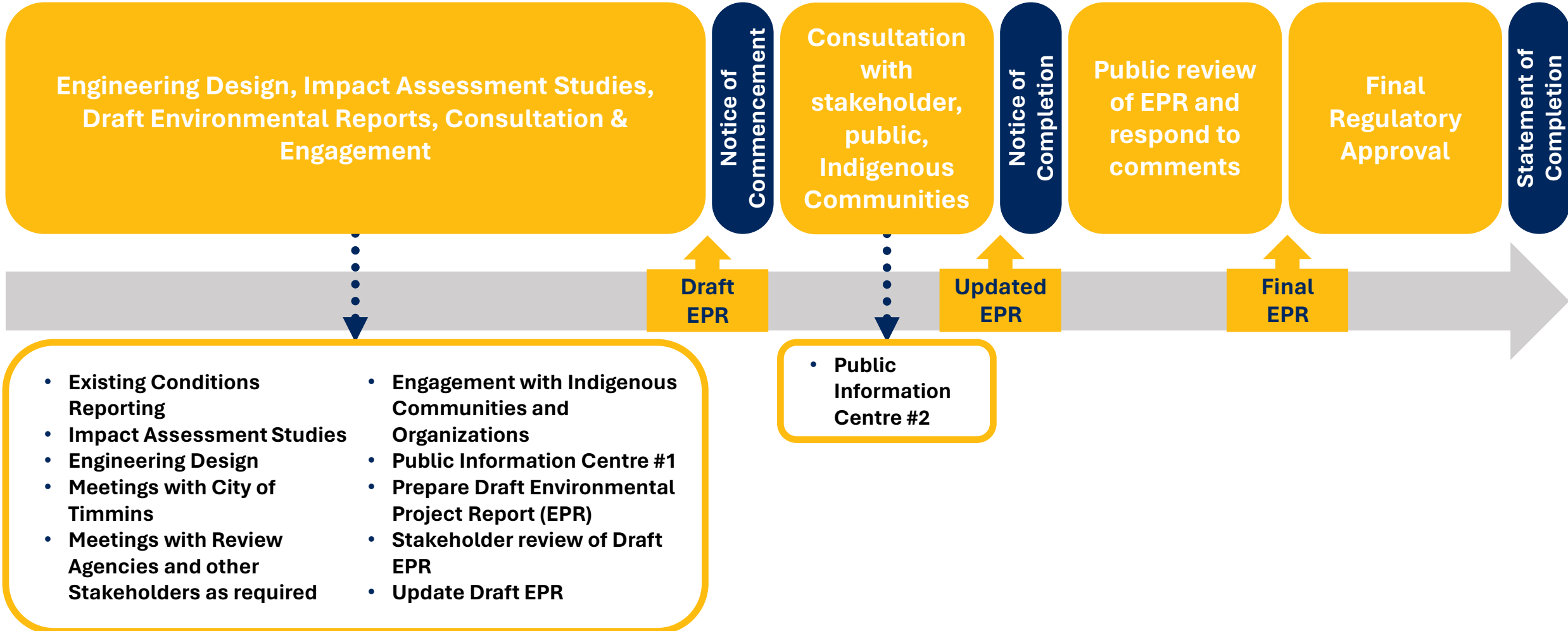
Project Component	Description
Train Station Platform	Train Station Platform features will include tactile warning strips, platform edge, and areas for Accessibility Cars to stop at the platform.
Station Building	Station Building features may include wicket for travel tickets and information, wicket for parcel drop-off/pick-up, waiting area, washroom, breakroom for crews and station staff.
Station Parking Facilities	Station Parking Facilities include features designated to accommodate accessibility, taxi stalls, drop off/pick up, general parking, employee parking.
Station Pedestrian Walkway	Station Pedestrian Walkway will be built around the station building, providing convenient access to various station elements.
Track Works	Track works to be confirmed through engineering design process.
Ontario Northland Bus Bays	Bus bays to be provided for a seamless connection to Ontario Northland motor coach services.
Municipal Bus Stop	Bus stop on the street to be provided for municipal bus service.
Bus Storage & Maintenance Facility	<i>*Protecting for land that may be required for potential future construction of a Bus Storage & Maintenance Facility.*</i>

Timmins-Porcupine Station Preliminary Study Area

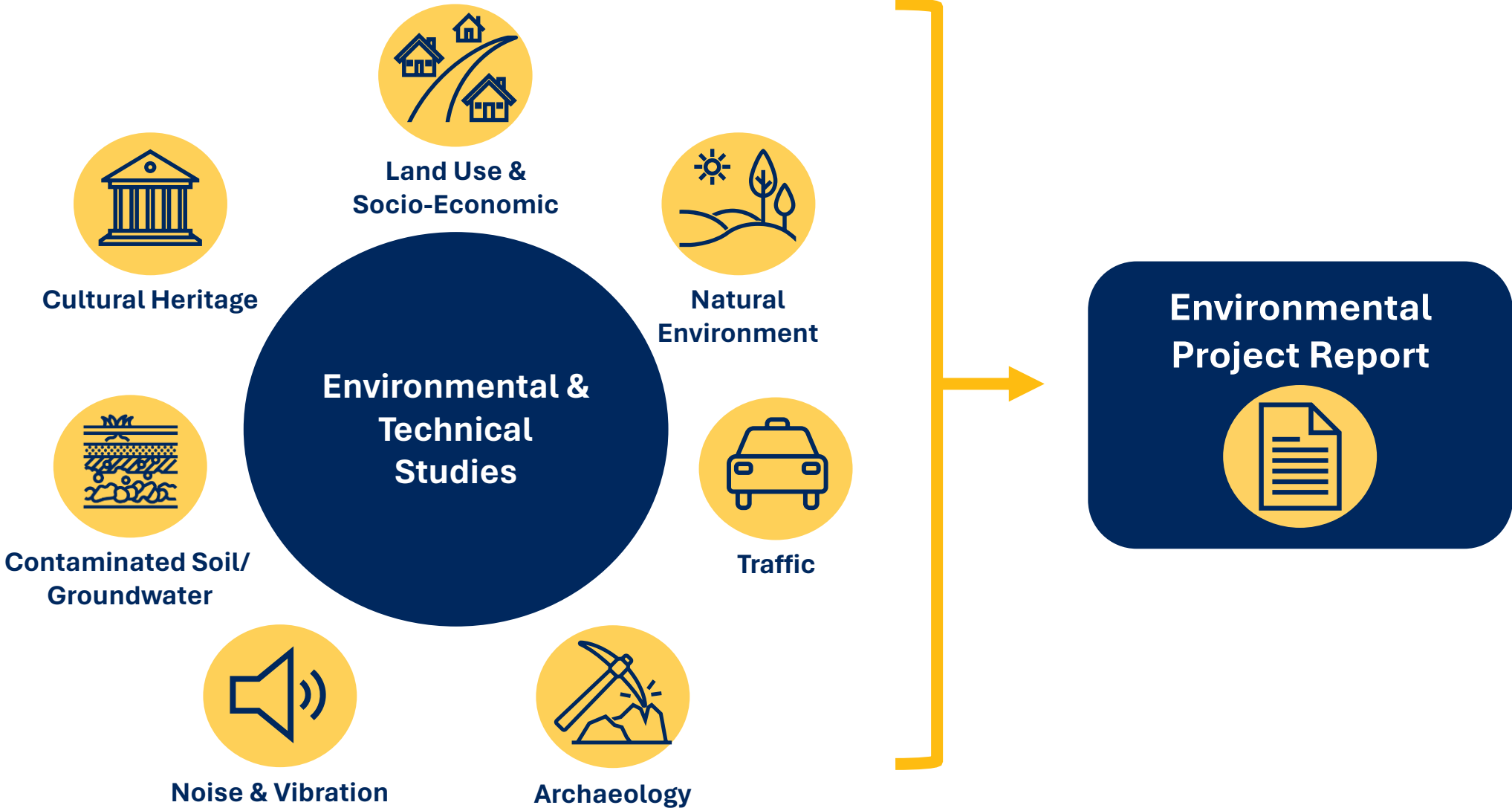


Environmental Assessment Process

Planning, Design and Environmental Assessment Process



Environmental Studies & Reporting



Land Use & Socio-Economic

The land use & socio-economic study is conducted to understand current and future land use conditions in a study area and assess potential effects the project may have on those features.

Desktop Study

A desktop review is conducted to identify significant socio-economic & land use features, including:



Commercial Areas



Institutional Uses



Employment Lands



Recreational Uses



Parks & Open Spaces



Where possible, design will avoid impacts to socio-economic and land use features.

Where effects cannot be avoided, mitigation measures may include such recommendations as:



Maintain Access



Aesthetic Screening



Other Nuisance Reduction

Natural Environment

A Natural Environment study will identify existing natural heritage features in the study area as well as potential impacts on the terrestrial and aquatic environment and habitats. Key components being reviewed as part of the study include:



Wildlife



Designated Natural Areas



Aquatic and Terrestrial Habitat



Species at Risk (SAR)

All regulatory requirements such as the *Migratory Birds Convention Act*, *Endangered Species Act* and *Species at Risk Act* will be met. Best management practices, mitigation strategies, and species-specific mitigation measures will be implemented, as required, in consultation with applicable regulatory agencies such as the Ministry of the Environment, Conservation and Parks and Environment.



Traffic

If modifications to the existing traffic configuration are required to facilitate construction activities, a traffic impact assessment may be required to evaluate intersection capacity and potential detour routes.

Construction will be carried out in a safe manner and work sites will be kept isolated from the public by diverting pedestrian, recreational vehicle, cyclist and vehicular traffic around work zones and using effective wayfinding.

Potential traffic impacts during construction may include:



Temporary road or lane closures and impacts to nearby driveway accesses



Increased travel times



Access restrictions to local bus routes



Congestion due to construction vehicles



Temporary effects on cyclists, pedestrians, and snow mobilists



Traffic control at King Street and Gervais Street North Intersection

Archaeology

Governed by provincial standards and guidelines issued by the Ministry of Citizenship and Multiculturalism, the work is carried out by licensed professional archaeologists.

Stage 1

An Archaeologist determines and evaluates areas of archaeological potential

Stage 2 & 3

Based on Stage 1 results, an archaeologist surveys the land (if required)

Stage 4

Based on Stage 2 & 3 results, an archaeologist conducts mitigation or salvage (if required)

These stages are only required if the previous report recommends it.



Construction Noise & Vibration

During construction, the use of heavy machinery may cause some noise & vibration above *existing baseline levels*. The noise & vibration study components may include:

Ontario 

Review of Ministry of Environment, Conservation and Parks (MECP) noise level standards



Conducting surveys at properties that may be affected by vibration-causing activities



Identify measures to minimize noise & vibration, where possible



Monitoring requirements for noise & vibration levels during construction



Addressing community concerns

Contaminated Soil/Groundwater

A Soil and Groundwater Characterization Program will determine the soil and groundwater conditions at the site. The program will be conducted to support the management of excess soil and groundwater. The investigation will be conducted in general accordance with *Ontario Regulation 153/04 – Records of Site Condition* and *Ontario Regulation 406/19 – On-site and Excess Soil Management*.



Collection of soil samples in conjunction with the geotechnical investigation for the site



Installation of monitoring wells in the boreholes drilled during the geotechnical investigation



Development of the monitoring wells and collection of groundwater samples



Submission of soil and groundwater samples for laboratory analysis



Evaluation of the soil and groundwater analytical data for the site



A Soil and Groundwater Characterization report will be prepared and provide recommendations for the management of excess soil and groundwater during construction.

Cultural Heritage

Cultural Heritage Assessment

A Cultural Heritage Specialist identifies known & potential Built Heritage Resources (BHRs) and Cultural Heritage Landscapes (CHLs)

Cultural Heritage Evaluation

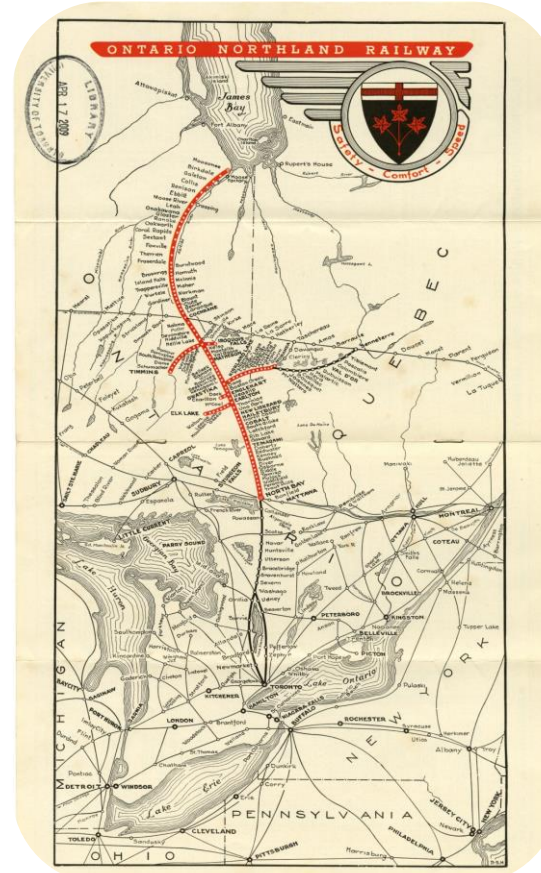
Based on Cultural Heritage Assessment results, a Cultural Heritage Specialist evaluates the Cultural Heritage Value or Interest (if required)

Heritage Impact Assessment

Based on Cultural Heritage Evaluation results, a Cultural Heritage Specialist conducts a Heritage Impact Assessment (if required)

These stages are only required if the previous report recommends it.

Governed by provincial guidelines issued by the Ministry of Citizenship and Multiculturalism, work is carried out by a cultural heritage specialist.



Ontario Northland Railway Map, 1956



C.N.R. Station, Huntsville



Gravenhurst G.T.R. Station, 1920

Community Engagement



Ontario Northland is committed to engaging with the local community throughout the project by:

- Providing opportunities to share information about project updates
- Understanding how the station design will fit within the community
- Listening to the community's perspective, collecting input and considering options to mitigate impacts where required



As part of the environmental assessment process, we are currently seeking feedback in areas such as:

- Significance and use of unique community features (e.g., landmarks and meeting places)
- Information on how parks and snowmobile trails within the community are used
- General questions regarding the environmental assessment process, studies being undertaken, next steps, etc.



Join our mailing list!

- Visit us online at: ontarionorthland.ca/en/northlander-passenger-rail-updates

Comment Sheet

**Northeastern Passenger Rail Project –
Timmins Station Environmental Assessment**

September 29, 2023

Name:

E-mail address:

Please comment on any community features of interest (e.g., landmarks, parks/recreational features, snowmobile trails, etc.) within the general vicinity of the Study Area that should be considered as part of planning/design.

What potential project impacts are you most concerned about and why?

Any other general comments, questions or feedback for ONTC?

Please leave your completed feedback form with an ONTC staff member on the way out.

If you would like further information and/or would like to receive regular project updates, please join our mailing list:



ontarionorthland.ca/en/northlander-passenger-rail-updates

All personal information included in your request – such as name, address, telephone number and property location – is collected and maintained for the purpose of creating a record that is available to the general public. As this information is collected for the purpose of a public record, the protection of personal information provided in the *Freedom of Information and Protection of Privacy Act* (FIPPA) does not apply (s.37). Personal information you submit will become part of the available public record unless you request that your personal information remain confidential.